

2018 / 2019 PRODUCT GUIDE

PERFECT PREVENTION



ACCURATE IMPRESSIONS



EFFICIENT DELIVERY

BEAUTIFUL RESULTS



Making Dentistry EasierSM

IMPRESSIONING

DELIVERY
SYSTEMS

ORAL CARE
& PREVENTION

TISSUE
MANAGEMENT

TEMPORIZATION

RESTORATIVE

FINISHING &
POLISHING

ENDODONTIC



Making Dentistry Easier.SM

The Dental Products You Know and Trust.

Did you know Centrix is the company behind over 200 innovative products? Our **Benda® Brush**, the original bendable bristle brush applicator was the first of its kind. And **FluoroDose®**, our unit-dose fluoride varnish, available in 5 delicious flavors has won top fluoride varnish 4 years in a row!

Centrix was founded by Dr. William Dragan, a restorative dentist passionate about finding “a better way” to use and place modern materials in order to make dentistry easier. What began as an idea almost 50 years ago, turned into a patent, that became the first-ever composite syringe system.

Dr. Dragan’s ingenious composite syringe enabled direct-to-the-prep delivery of new composite materials, making routine dental procedures easier on the dentist and patient.



With our innovative products, dental professionals are now reinventing the way they care for their patients.



Innovative Products that Help Your Practice Thrive.

- Make common procedures simpler and easier to perform
- Produce accurate, consistent and correct clinical outcomes
- Ensure safety and comfort that helps you retain patients
- Increase your profitability by saving time, materials and waste

Make Dentistry Easier.

Today, Centrix engineers and manufactures hundreds of dental products focused primarily on general restorative and preventative dentistry, the heart and soul of most dental practices. As a leader in materials and delivery systems, Centrix continues to introduce original and inventive dental systems and products certain to become the new standard in our industry.

We are Centrix products experts. We partner with your dealer. Your dealer is your fulfillment and service expert. Together we partner to give you the best products, the best service and the best pricing.



200+
Dental
Products



Efficient
and Reliable
Customer Service



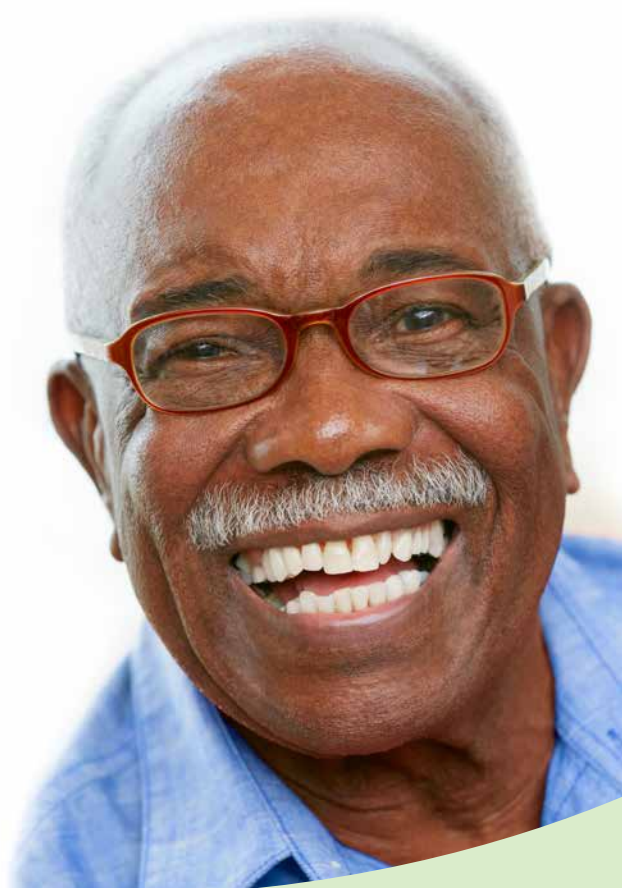
New Product
Guarantee

See page 47 for
more information.

PREVENTION FOR LIFE®

From The First Tooth, To A Lifetime Of Smiles.

For more information on **Prevention for Life**, and to see our complete line of preventive products, turn to **page 23**.



FLUORODOSE®

5% Sodium Fluoride
Varnish with Xylitol



CHAMP™

Pit & Fissure Sealant

EXPOSÉ®

Caries Indicator Kit

LOLLICAINE®

20% Benzocaine
Topical Anesthetic Gel



TABLE OF CONTENTS

IMPRESSIONING

NoCord™ VPS One-Step, Self-Retracting Impressioning System	6-8
Access BLUE® VPS Quick Bite Registration Material	9
Access® Impression Materials Vinyl Polysiloxane, Heavy, Monophase, Gold & Putty (VPS) for All Impression Techniques	10
3.n.One™ Impression Trays For Dual-Arch Impression Technique	11
Access® Syringes Brushes	11
Access® Standard™ Impression Needle Tip	11
Access® Tray Adhesive	11

DELIVERY SYSTEMS

C-R® Syringes and Guns	12-14
SuperMixer™ Automix Mixing Tips	15
Access® Syringes & Tips	16
Automix Guns	16
AccuDose® Disposable Tubes & Plugs	17-19
Luer-Lock Needles	19
SofNeedle™	19
Access® Standard™ Impression Needle Tip	19
VersaBox™	19
Mixing Pads & Spatulas	19
Benda® Brushes	20
Benda® Micro Applicators	21-22

ORAL CARE & PREVENTION

FluoroDose® Fluoride Varnish with Xylitol	23
Champ™ Pit & Fissure Sealant	24
Exposé® Caries Indicator Kit	24
D/Sense® Crystal™ Dual-Action Crystal Precipitate Desensitizer Gel	25
LolliCaine® Topical Anesthetic	25

TISSUE MANAGEMENT

GingiTrac™ MiniMix and GingiTrac™ Automix VPS Gingival Retraction System	26-27
GingiCap™ Compression Caps	27
Access® Edge High-Viscosity Kaolin Clay-Based Retraction Paste	28
AccessFLO® Low-Viscosity Flowable Kaolin Clay-Based Retraction Paste	28

TEMPORIZATION

Access Crown® Bis-Acryl Composite for Provisional Crowns & Bridges	29
Access® Temporary Cement Automix Temporary Cement	30
NoMIX® Temporary Cement Moisture-Activated Temporary Cement	30
Tempit® Essentials Temporary Filling and Sealing Kit	31
Tempit® Moisture-Activated Temporary Filling and Sealing Material	31
Tempit® L/C Light-Activated, Flexible Temporary Restorative Material	31
Tempit® Ultra-F Light-Activated, Rigid Intermediate Restorative Material with Fluoride	31
Tempit® Ultra Light-Activated, Rigid Intermediate Restorative Material without Fluoride	31

RESTORATIVE

Encore® D/C MiniMix® and Encore® D/C Automix Dual-Cure Core Buildup Composite	32
Connexio™ Self-Etch Bond	33
Encore® Self-Cure Core Buildup Composite	34
Encore® AF Advanced Formula Self-Cure Core Buildup Composite	34
SuperCure® Original and SuperCure®-Q Light-Activated Core Buildup Composite	35
Onyx™ 40% Phosphoric Acid Etching Gel	35
RapidCore® Self-Cure Core Buildup Composite	36
LubeCube® Composite Instrument Cleaner & Lubricator	37
VersaFlo® Light-Activated Flowable Composite Resin	38
VersaLite® Light-Activated Hybrid Composite Resin	38
AbsoLute™ Self-Adhesive Resin Cement	39
Glu/Sense™ Dentin Pre-Treatment Desensitizer Gel	39

FINISHING & POLISHING

Couture Diamond Finishing & Polishing Kit	40
Couture Diamond Polishing Cups and Points	40
Couture Diamond Polishing Brush	41
Couture Diamond Polishing Paste	42
ProxiDiscs® Interproximal Separators	42
Diamond GripStrip™ Proximal Finishing & Polishing Strips	43

ENDODONTICS

MicroAspirator® HVE Aspirator	44
Calciject® Calcium Hydroxide Paste for Root Canal Treatment	44
Tempit® Moisture-Activated Temporary Filling & Sealing Material	44

Connect with us!

 Centrix-Inc

 @CentrixInc

 centrixdental

 Centrix Inc.

 CentrixInc

NoCord™ VPS

One-Step, Self-Retracting Impressioning System

Finally, an impression material that:

- Creates sulcular expansion
- Integrates built-in hemostasis
- Protects delicate gingival tissues

Now...
Even Better!

Better
Marginal
Detail

Better
Fluids
Control

+20%

Better
Tear
Strength

“

The use of NoCord impression material, combined with its hemostatic agents, can also stop the oozing and safely widen the sulcus to allow a more accurate and detailed capture of the margins.

Tarun Agarwal, DDS & Gregori Kurtzman, DDS Dentistry Today, Jan. 2017

A Different VPS.

Making Impressioning Easier!

Eliminates the need for separate retraction and hemostasis steps.

NoCord™ VPS, a revolutionary one-step, self-retracting impressioning system that makes impression taking easier, more predictable and more assured. NoCord™ Wash plus NoCord™ MegaBody™ Tray Materials produce highly accurate dental impressions without the need for retraction cords, pastes and gels. **Made in the USA.**

Here's what makes NoCord™ different and better:

- The first VPS with built-in hemostasis. Stops bleeding and fluid flow for clear margins, exceptional detail.
- MegaBody™ Tray Material creates sulcular expansion. Drives the Wash into the sulcus, displacing soft tissue, exposing all margins.
- NoCord VPS is rigid and stable. Great results in the most demanding cases.
- NoCord VPS compliments your technique. Whether you use two cords, paste or no retraction at all, NoCord makes impressioning safer, easier and more error free.
- VPS impression material so you can be sure:
 - Exceeds ISO standards for impression materials
 - Dimensional stability
 - Highly accurate impression
 - Better results



Clean Capture. Beautiful Results!

Here's what makes NoCord better for you:

Often: You will need no cord.



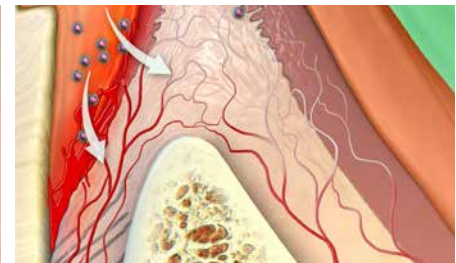
Supragingival margins and relatively healthy tissue is the perfect case for NoCord!

Many times: Only one cord.



The sulcular expansion NoCord creates often eliminates the need to place a second cord.

Every time: Safer, Easier, Better.



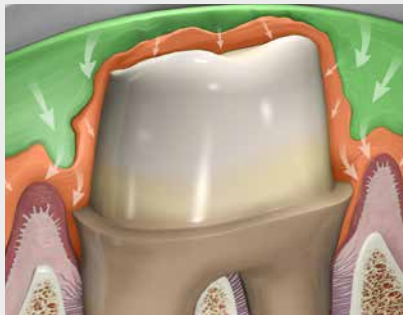
NoCord Wash and its 15% alum (ammonium aluminum sulfate) astringent against the gingiva helps eliminates re-bleeders and pooling of blood, while protecting fragile tissue.

Product/Material	Color	Mixing Time	Working Time	Total Set Time
NoCord™ Wash	Coral Orange	Auto	1:00	4:45
NoCord™ MegaBody™ Tray	Seafoam Green	Auto	1:00	4:45

NoCord VPS Makes Impressioning

Safer.

- Gently expands the sulcus
- No cord or packing instrument
- Protects against damage to the epithelial attachment
- No concerns about recession

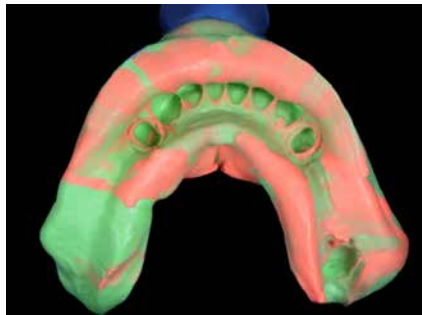


“When a patient has **thin** tissue that is **prone** to recession or recently had a periodontal procedure, I can **avoid packing cord and safely record the detail.**”

*David Polhemus, DDS, AACD
Inside Dentistry, Aug. 2017*

Easier.

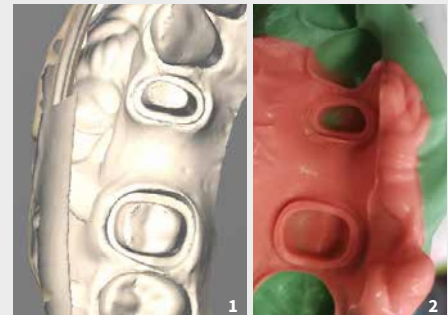
- NoCord Wash. NEW Integrated hemostasis
- MegaBody 50 mL cartridges that are easier to extrude
- 380 mL cartridges for automatic mixing machines
- Dual arch or full arch, your preference



WORK ≤ 1:00 min / SET ≥ 4:45 min

Better!

- Single units or large span cases, NoCord provides an extra margin of safety
- Rigid. More accurate implant impressions
- For cord users, controls rebleeders when a cord is removed
- **Scans easily for detailed digitization**



“The use of NoCord impression material, combined with its **hemostatic agents**, can also **stop the oozing** and **safely widen the sulcus** to allow a more accurate and detailed capture of the margins. Having this option can help **prevent the need to have the patient return** for another appointment to attempt a better intraoral scan or more time consuming use of cords or pastes at that appointment.”

*Gregori Kurtzman, DDS, & Tarun Agarwal, DDS
Dentistry Today, Jan. 2017*

REF	DESCRIPTION	QTY
310285	NoCord™ VPS System Intro Kit Wash (50 mL) MegaBody™ (50 mL) SuperMixer™ Mixing Tip, Teal Hub SuperMixer™ Mixing Tip, Yellow Hub with 18 ga tip	6 12 12 12
310280	NoCord™ VPS Introductory Trial Kit Wash (50 mL) MegaBody™ Tray Material (50 mL) SuperMixer™ Mixing Tip, Yellow Hub SuperMixer™ Mixing Tip, Teal Hub	1 2 12 12
310281	NoCord™ VPS MegaBody™ Tray Material 2-pk (50 mL) SuperMixer™ Mixing Tip, Teal Hub	2 6
310282	NoCord™ VPS Wash Material 2-pk (50 mL) SuperMixer™ Mixing Tip, Teal Hub	2 6
310283	NoCord™ VPS MegaBody™ Tray Material 10-pk (50 mL) SuperMixer™ Mixing Tip, Teal Hub	10 12
310284	NoCord™ VPS Wash Material 10-pk (50 mL) SuperMixer™ Mixing Tip, Teal Hub	10 12
310286	NoCord™ VPS MegaBody™ 380 Tray Material 1-pk MegaBody™ Tray Material (380 mL) SuperMixer™ Mixing Tips, 380 Yellow Bayonet Ring	1 10 1
310287	NoCord™ VPS MegaBody™ 380 Tray Material 2-pk MegaBody™ Tray Material (380 mL) Bayonet Ring	2 1

REF	DESCRIPTION	QTY
360005	Access™ VPS Tray Adhesive	1
360010	SuperMixer™ Mixing Tip Teal Hub	24
910631	SuperMixer™ Mixing Tip Yellow w/18 ga tip	50
910637	SuperMixer™ with Mixing Tip 380 Yellow	40
910638	SuperMixer™ Bayonet Ring 2-pk Yellow	2
360036	Automix Gun 50 mL 1:1/2:1	1

Photo credits: #1 & 2, Dr. Summer Lerch, New Haven, CT.



To watch product videos, visit YouTube:
CentrixInc & CentrixNoCordVPS.com

IMPRESSIONING

Access BLUE® Bite Registration

VPS Quick Bite Registration Material

Access BLUE® Bite Registration Material is fast setting, highly accurate, very stiff and dimensionally stable. It uses a mousse-like viscosity for highly accurate bite registration techniques. Access BLUE delivers rigid, stable, accurate bite registrations that enable the lab to easily replicate correct intercuspal and centric relationships. **Made in the USA.**

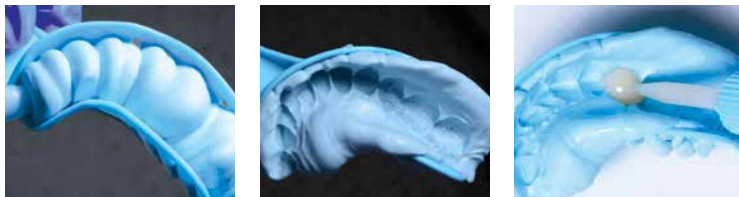
- The easiest, most accurate bite registration
- Sets hard like laboratory plaster in just 30 seconds
- Allows you to cut and trim the impression without it crumbling

Product	Color	Technique	Mixing Time	Working Time	Intraoral Time	Total Set Time
Access BLUE	Light Blue	Bite Registration	Auto	:30	1:00	1:30

CASE 1 – BITE REGISTRATION



CASE 2 – PROVISIONAL MATRIX



REF	DESCRIPTION	QTY
360006	Access BLUE Kit:	
	50 mL Cartridge	2
	SuperMixer™ Mixing Tip, Teal Hub	6

SUGGESTED ACCESSORIES

REF	DESCRIPTION	QTY
360010	SuperMixer Mixing Tip, Teal Hub	24
360036	50 mL 1:1/2:1 Automix Gun	1

REF	DESCRIPTION	QTY
360011	Anterior Trays	35
360012	Posterior Trays	50
360013	Quadrant Trays	35
360014	40 Assorted Trays:	
	Anterior	8
	Posterior	8
	Quadrant	8
	Sideless Posterior	8
	Wide Body	8

IMPRESSIONING

Access® Impression Materials

Vinyl Polysiloxane (VPS) for All Impression Techniques

Accurate, dimensionally stable impressions are the critical requirement for well-fitting restorations. That's why Centrix Access Impression Materials feature no-compromise VPS formulas that ensure you of successful results, time after time. Trust Access Impression Materials to deliver exacting performance in all crown and bridge cases. Choose from our complete line of ADA-standard viscosities and impression accessories, which are patient-friendly, odor-free and taste-free including high efficiency SuperMixer™ Tips, giving you more material with less waste. **Made in the USA.**



HIGH-EFFICIENCY
SUPERMIXER™
26%
LESS WASTE



- **Access GOLD®** low viscosity wash material, syringes easily into sulcus and around prep through SuperMixer mixing tips. High contrast color makes it easy to see margins and verify all margins have been captured.
- **Access MONOPHASE®** is a non-slumping, medium body tray material for one-step, impressioning techniques. It remains in place while loading into both sides of dual arch trays and helps stabilize the tray, preventing distortion and rebound. Syringeable through SuperMixer mixing tips. Contains hydrophilic additives for higher accuracy and low contact angle.
- **Access HEAVY®** is a non-slumping, heavy body tray material. It remains in place while loading both sides of dual arch trays; stabilizes tray and prevents distortion and rebound.
- **Access PUTTY®** is the ideal tray material for the 2-step putty and wash technique, in combination with Access GOLD. Non-oily and easy to mix, Access PUTTY may be used with any brand of metal or plastic impression tray.

Access Impression Materials Viscosity & Setting Times

Product	Color	Technique	Mixing Time	Working Time	Total Set Time
Access GOLD	Gold	Wash, Syringe Injection	Auto	1:30	4:15
Access MONOPHASE	Purple	Tray, One Step	Auto	2:00	4:15
Access HEAVY	Pink	Tray	Auto	2:00	4:15
Access PUTTY	White/Blue	Tray	0:30	2:00	4:15

SUGGESTED ACCESSORIES

REF	DESCRIPTION	QTY
360010	SuperMixer™ Mixing Tips, Teal Hub	24
910628	SuperMixer Mixing Tip, Yellow Hub	50
910631	SuperMixer Mixing Tip, Yellow Hub with preassembled 18 ga, Stainless-steel Tip	50
290022	Automix Nozzle Tip, 20 ga Aqua Blue	144
290025	Automix Nozzle Tip, 18 ga Green	144
290080	Automix Nozzle Tip, 20 ga Blue	144

REF	DESCRIPTION	QTY
360002	Access GOLD Kit: 50 mL Cartridge SuperMixer Mixing Tip, Teal Hub Access® 18 ga Yellow Needle Tip	2 6 6
360017	Access MONOPHASE Kit: 50 mL Cartridge SuperMixer Mixing Tip, Teal Hub	2 6
360016	Access HEAVY Kit: 50 mL Cartridge SuperMixer Mixing Tip, Teal Hub	2 6
360015	Access PUTTY Kit (Catalyst and Base): 280 mL jars with color-coded scoops	2

IMPRESSIONING

Access® Standard™ Impression Syringe



- Compact, traditional syringe design
- Precise application and easy to control
- Stainless-steel barrel and hub
- Autoclavable
- Made in the USA

REF	DESCRIPTION	QTY
110010	Syringe with 50 Access Standard Needle Tips	1
110009	Syringe Only	1
100007	Impression Cleaning Brushes	5

Access® Disposable Barrel Impression Syringe



- Compact autoclavable handle
- Precise application and easy to control
- Disposable barrel, with integrated Access 18 ga stainless-steel needle tip, eliminates cleanup

REF	DESCRIPTION	QTY
290021	Syringe Barrels Only	144
290020	Handle with 72 Barrels	1
110007	Handle Only	1

Access® Standard™ Impression Needle Tip



- Works with the Access Standard Impression Syringe and other traditional impression syringes
- Disposable 18 ga stainless-steel needle tip
- Slim needle reaches into the sulcus

REF	DESCRIPTION	QTY
290016	18 ga White	144
290019	18 ga White	500

Access® Tray Adhesive



Access® Tray Adhesive ensures reliable adhesion of impression material to the impression tray to avoid deformation.

REF	DESCRIPTION	QTY
360005	Access Tray Adhesive (10 mL Bottle)	1

3.n.One™ Impression Trays For Dual-Arch Impression Technique



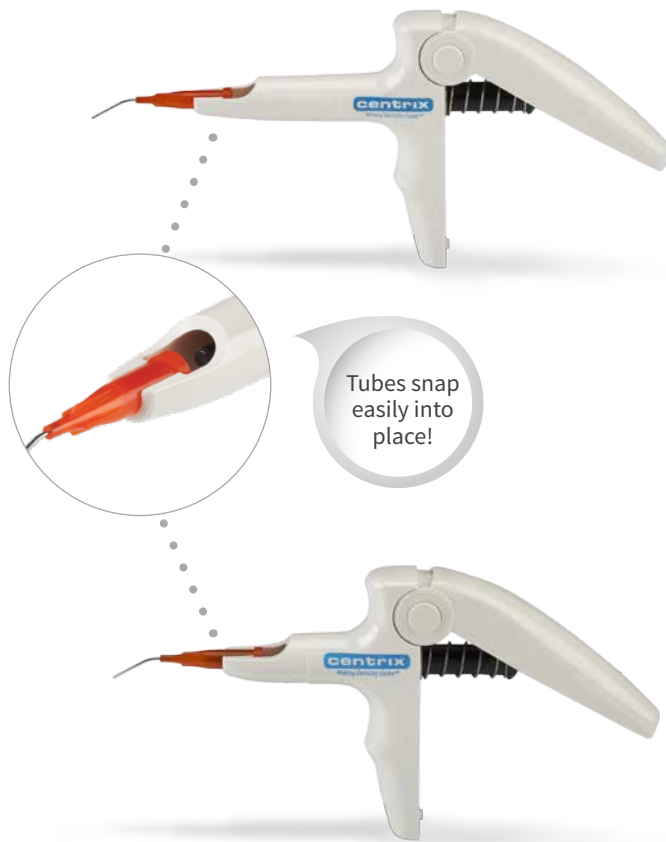
- Unique undercut ridges lock impression materials in place
- High rigidity with non-tear, flexible webbing ensures maximum accuracy
- Five different shapes to meet all applications

REF	DESCRIPTION	QTY
360011	Anterior Trays	35
360012	Posterior Trays	50
360013	Quadrant Trays	35
360014	40 Assorted Trays:	
	Anterior	8
	Posterior	8
	Quadrant	8
	Sideless Posterior	8
	Wide Body	8

DELIVERY SYSTEMS

Centrix's unique Composite Resin (C-R) Syringes and Guns are available in 7 models and include high-leverage guns and traditional syringes.

Easy to load, fully autoclavable to eliminate cross-contamination concerns. Trusted and clinically proven for almost 50 years. Made in the USA.



Snap-Fit™ Gun

- Easy loading, tubes snap into barrel, locking them in place
- Exclusive handle design provides 4:1 leverage for easy, smooth extrusion
- Works with all Centrix Tubes and Plugs
- Autoclavable

REF	DESCRIPTION	QTY
130650	Snap-Fit Gun	1

Snub Nose Snap-Fit™ Gun

- Same features and benefits as the Snap-Fit Gun with a shorter barrel
- Exclusive handle design provides 4:1 leverage for easy, smooth extrusion
- Ideal for use with MiniMix cartridges

REF	DESCRIPTION	QTY
130651	Snub Nose Snap-Fit Gun	1



The following 2 pages feature C-R Syringes and Guns which include TriPack™ Starter Kits*

Each AccuDose® TriPack Starter Kit contains 75 assorted tubes and plugs: 25 each of AccuDose High Viscosity, Low Viscosity and NeedleTubes.



Mark I™ Syringe

- Original C-R Syringe with stainless-steel barrel
- Perfect direct push for maximum feedback when syringing low- to medium-viscosity materials
- Autoclavable
- Side-load breech barrel

REF	DESCRIPTION	QTY
110615	*Mark I + Tri-Pack Starter Kit	1
110000	Syringe Only	1



Mark II™ Snap-Fit™ Syringe

- Easy loading Snap-Fit design
- Perfect direct push for maximum feedback when syringing low- to medium-viscosity materials
- Works with all Centrix Tubes and Plugs
- Autoclavable

REF	DESCRIPTION	QTY
140615	*Mark II + Tri-Pack Starter Kit	1
140000	Syringe Only	1
100037	Mark I + II Snap-Fit Plunger	1



Mark IIIp™ Gun

- With speed-slot loading
- Ideal for all viscosity materials
- Autoclavable
- 4:1 leverage for easy, smooth extrusion

REF	DESCRIPTION	QTY
130615	*Mark IIIp + Tri-Pack Starter Kit	1
130600	Gun Only	1
100033	Mark III Plunger/Spring, 5/8"	3

DELIVERY SYSTEMS



Each AccuDose® TriPack™ Starter Kit contains 75 assorted tubes and plugs: 25 each of AccuDose High Viscosity, Low Viscosity and NeedleTubes.*



E/Z™ Gun

- Stainless-steel front barrel
- “Drop n’ Lock” loading feature for easy tip insertion and removal
- Available in White or Blue
- 4:1 leverage for easy, smooth extrusion
- Autoclavable

REF	DESCRIPTION	QTY
130715	*E/Z+ Tri-Pack Starter Kit (with White gun)	1
130700	Gun Only, White	1
130730	Gun Only, Blue	1
100036	C-R E/Z Plunger/Spring	1



S/Class® Gun

- 100% stainless-steel gun
- “Drop n’ Lock” loading feature for easy tip insertion and removal
- Lifetime warranty
- 4:1 leverage for easy, smooth extrusion
- Autoclavable

REF	DESCRIPTION	QTY
170615	*S/Class®+ Tri-Pack Starter Kit	1
170600	Gun Only	1
100034	S/Class Plunger/Spring	1



Direct loading from a bulk syringe



Back-filling material directly off a pad



Easy to load! Place tube into any Centrix C-R Syringe or Gun

DELIVERY SYSTEMS

SuperMixer™ Automix Mixing Tips

High-efficiency mixers for less waste!



Centrix SuperMixers are the next-generation high performance mixing tips with an all-new mixing technology, easier-to-use design and up to 38% reduced material waste!*

- Designed for 1:1 automix systems
- SuperMixer is a high-efficiency mixer providing up to 38% reduced material waste
- Provides consistent mixing of impression, crown, core buildup, gingival retraction and glass ionomer cement materials
- Color-coded hub for specific material usage (shown in order of REF number, from left to right)
- Replaces any 1:1 mixing tip – same color for same color

GET MORE!

REDUCES WASTE UP TO 38% ~ 4% MORE UNITS PER CARTRIDGE!

Hub Color	Typical Applications	*Waste Reduction (avg.) ¹	Additional Uses (per 50 mL/76 gr Cartridge) ²	More Usable Material
● Blue Hub	Temp. Crown & Bridge	38%	31	69%
● Yellow Hub	Core Buildup	29%	22	28%
● Pink Hub	Retraction	30%	10	34%
● Teal Hub	Impression Making	28%	2 ¹	22%

Your practice will reduce waste, save time and increase profits with SuperMixer Mixing Tips. SuperMixer tips enable users to get many more uses of every type of material, resulting in significant increases in the amount of usable material in every cartridge. Up to 20% more units than with traditional automix mixing tips.

SuperMixer™

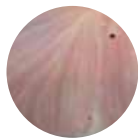
Even, complete mixing of material



New Tech Super Mixer

Traditional Mixer

Uneven, striated, incomplete mixing of material



Old Tech Spiral Mixer



REF	DESCRIPTION	QTY
● 910626	SuperMixer Mixing Tip, Blue Hub (for temp. crown & bridge material)	50
● 910628	SuperMixer Mixing Tip, Yellow Hub (for core buildup & wash material)	50
● 910632	SuperMixer Mixing Tip, Pink Hub (for gingival retraction material)	50
● 360010	SuperMixer Mixing Tip, Teal Hub (for all impression material)	24
● 910631	SuperMixer Combo Tip, Yellow Hub with 18 ga Tip (for core buildup & wash material)	50
910637	SuperMixer Mixing Tip, 380 Yellow	40
910638	Bayonet Ring, Yellow	2

1. Average waste reduction vs. old-style nozzles, per 50 mL cartridge using Centrix materials. Results may vary depending on material.
 2. Average number of additional core buildups per 50 mL / 76 gr cartridge.
¹Bite registration from 2 cartridge kits.

DELIVERY SYSTEMS



Access® Disposable Barrel Impression Syringe

- Compact autoclavable handle
- Precise application and easy to control
- Disposable barrel with integrated Access 18 ga stainless-steel needle tip eliminates cleanup

REF	DESCRIPTION	QTY
290021	Syringe Barrel Only	144
290020	Handle with 72 barrels	1
110007	Handle Only	1



Access® Standard™ Impression Syringe

- Compact, traditional syringe design
- Precise application and easy to control
- Stainless-steel barrel and hub
- Autoclavable
- **Made in the USA**

REF	DESCRIPTION	QTY
110010	Impression Syringe Impression Syringe Tip	1 50
110009	Syringe Only	1
290016	18 ga White Tip	144
290019	18 ga White Tip	500
100007	Impression Cleaning Brushes	5
100008	Standard Impression Syringe O-Ring	6
100038	Standard Impression Syringe Plunger	1



Automix Guns

- 25 mL - For use with Encore® D/C and RapidCore® 25 mL cartridges
- 50 mL - For use with Access Crown®, Access® Impression Materials and GingiTrac™ 50 mL cartridges
- Autoclavable

REF	DESCRIPTION	QTY
310156	25 mL 1:1/2:1 Automix Gun	1
360036	50 mL 1:1/2:1 Automix Gun	1



Access® Automix Needle Tips

- For use with Automix Tips and SuperMixer Mixing Tips
- Yellow stainless-steel tips for use with GingiTrac™ and Access Impression Materials
- Aqua blue stainless-steel tips for use with Access Impression Material
- Green stainless-steel tips for use with NoCord™ VPS, Encore® D/C and RapidCore®
- Dark Blue stainless-steel tips for use with NoCord VPS
- Dark Blue tips for access into small areas (e.g., sulcus)

REF	DESCRIPTION	SUPERMIXER™ (hub color compatibility)		QTY
290017	18 ga Yellow	● + ●	●	144
290028	18 ga Yellow	● + ●	● ●	500
290022	20 ga Aqua Blue	● + ●	● ●	144
290025	18 ga Green	● + ●	●	144
290080	20 ga Dark Blue	● + ●	●	144



To watch product videos, visit YouTube: CentrixInc

AccuDose® 19 ga NeedleTube®



- Easily bendable, stainless-steel needle tip
- Green tube with white plug
- Perfect for injecting medium-viscosity and higher-viscosity flowable composites, glass ionomers and cements into post holes, deep proximal boxes, and tunnel preps
- Compatible with all C-R Syringes and guns

REF	DESCRIPTION	QTY
290032	19 ga NeedleTube	100
290035	19 ga NeedleTube	500
220008	White Plug	100

AccuDose® 20 ga NeedleTube®



- Easily bendable, stainless-steel needle tip
- Transparent PhotoBloc™ orange tube with green plug
- Perfect for injecting materials into postholes, deep proximal boxes and tunnel preps
- Compatible with all C-R Syringes and guns

REF	DESCRIPTION	QTY
290031	20 ga NeedleTube	100
290033	20 ga NeedleTube	500
220000	Green Plugs	100

AccuDose® 24 ga NeedleTube® AccuDose® TriPack™ Starter Kit



- Easily bendable, stainless-steel needle tip
- Longer stainless-steel needle tip
- Aqua blue tube with gray plug
- Perfect for low-viscosity materials such as cements and root canal sealers
- Great for use with endodontic materials
- Compatible with all C-R Syringes and guns

REF	DESCRIPTION	QTY
290049	24 ga NeedleTube	100



- 3 popular tubes in one kit
- Transparent PhotoBloc orange
- Compatible with all C-R Syringes and guns

REF	DESCRIPTION	QTY
920201	Assorted Tubes & Plugs	75

Kit contains 25 each of: 20 ga NeedleTubes, Low-Viscosity Tubes and High-Viscosity Tubes.

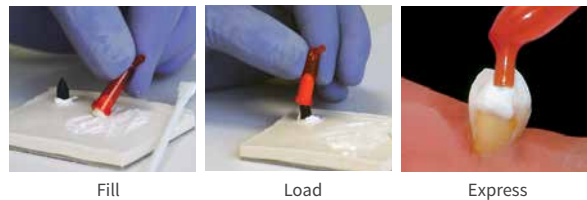
AccuDose® Ribbon Tube



- Transparent PhotoBloc orange tube with green plug
- Dispenses a thin and wide ribbon of material
- Useful for placing luting composite onto veneers and direct composite bonding onto anterior teeth
- Compatible with all C-R Syringes and guns

REF	DESCRIPTION	QTY
290041	Ribbon Tube	100

HOW TO USE DISPOSABLE TUBES



1. Select appropriate tube for material.
2. Place material on mixing pad (page 19).
3. Backload material into tube. (Do not load more than half full.)
4. Insert plug fully into tube.
5. Place tube into the syringe or gun barrel (page 12-14).
6. Squeeze syringe with slow, steady pressure.
7. Dispose of tube.
8. Sterilize syringe or gun.



DELIVERY SYSTEMS

AccuDose® Low Viscosity Tube

- All-purpose tube that can be clipped to have a larger opening if needed
- Transparent PhotoBloc™ orange tube with gray plug
- Perfect for flowable composites, core material, cements and glass ionomers
- Compatible with all C-R Syringes and guns



REF	DESCRIPTION	QTY
210021	Low-Viscosity Tube	100
210023	Low-Viscosity Tube	500
210000	Gray Plug	100

AccuDose® High Viscosity Tube

- Large opening allows viscous materials to flow easily
- Transparent PhotoBloc orange tube with black plug
- Perfect for highly-filled composites and core buildup material
- Compatible with all C-R Syringes and guns



REF	DESCRIPTION	QTY
280021	High-Viscosity Tube	100
280023	High-Viscosity Tube	500
290046	Black Plug	100



Separate Clear



Separate Black



PCR Clear



PCR Opaque

Medium Viscosity Tubes

- PCR Opaque and Separate Black tubes and plugs protect light-activated materials
- PCR Clear has a higher volume capacity and a larger opening than Separate Clear tube (about 30% more)
- Ideal for medium-viscosity, flowable materials such as composites, glass ionomers and cements
- Compatible with all C-R Syringes and guns

REF	DESCRIPTION	QTY
210001	Separate Clear	100
210003	Separate Clear	500
240001	Separate Black	100
270007	Separate Black	500
250011	PCR Clear	100
250001	PCR Opaque	100
250003	PCR Opaque	500



DELIVERY SYSTEMS



Access® Edge and NoMIX® Cement Needle Tip



VersaFlo® Needle Tip



Onyx™ Needle Tip

Luer-Lock Needle Tips

- Luer-lock design ensures that tips easily attach to syringes and stay secure
- Ideal for dispensing and applying liquids and light gels
- Blue (20 ga) or Gray (22 ga) tube with stainless-steel tip, or White (16 ga) with stainless steel tip

SofNeedle™

- Scratch-resistant soft polyurethane foam tip allows easy dispensing and spreading of liquids/gels and even burnishing materials onto the tooth.
- Superior control of flow on vertical surfaces due to the slight back pressure feature of SofNeedles.
- Luer-lock design ensures that tips securely attach to syringes.
- Perfect for dispensing and applying:
 - **Liquids and light gels:** Glu/Sense™ and D/Sense® Crystal™ Desensitizer
 - **Hemostatic agents, liquids and gels:** Rastringent*, Stat-Gel*, Gel-Cord*, Cut-Trol*, Astringent*, ViscoStat*
 - **Other uses:** Non-silica etching gels, pit and fissure sealants, porcelain etchants, caries indicators, Chlorhexidine, Benzalkonium Chloride, high spot indication liquid



Access® Standard™ Impression Needle Tip

- Works with the Access Standard Impression Syringe and other traditional impression syringes
- Disposable 18 ga stainless-steel needle tip
- Slim needle reaches into the sulcus

VersaBox™

- The perfect organizer for your chairside supplies or procedure kits
- This 7"x11" box comes with 10 adjustable dividers that let you customize, arrange and store items any way you want
- Durable construction, dishwasher and disinfectant safe
- Perfect for multi-practice travel supplies



Contents not included



Mixing Pads & Spatulas

REF	DESCRIPTION	QTY
330540	VersaFlo 20 ga Needle Tip	30
640002	Access® Edge and NoMIX® Cement 16 ga Needle Tip	30
640001	Onyx 22 ga Needle Tip	100

REF	DESCRIPTION	QTY
290038	22 ga Gray	144

REF	DESCRIPTION	QTY
290016	18 ga White	144
290019	18 ga White	500

REF	DESCRIPTION	QTY
333000	VersaBox with 10 Dividers	1
333001	VersaBox Divider	24

REF	DESCRIPTION	QTY
917001	Mixing Pad (50 sheets)	1
970077	Spatulas	50

*Not a trademark of Centrix, Inc.

ORGANIZE IT!
An Endo., Ortho. & Pedo. favorite!

DELIVERY SYSTEMS

Benda® Brush: Precision Disposable Brush Applicators

Perfect when you need to apply more than a drop.

The original bendable applicator! Benda Brushes are economical, multi-purpose applicators that make color coding procedures a snap. With chemical-resistant fibers that hold up to the harshest dental materials, Benda Brushes can be used to easily place whitening agents, etchants, bonding agents, sealants, desensitizers, adhesives and resins. The molded head design allows Benda Brushes to bend to any angle with no bounce back. The non-linting, non-absorbent fibers have a greater carrying capacity, ensuring better spreading and smoothing action. All Benda Brushes are disposable, eliminating cleanup and cross-contamination. Benda Brushes are available in single colors or in an assorted pack and come in 2 sizes for large and small application needs. Made in the USA.



Won't rebound!



Benda Brush Regular

- Regular point, black bristles
- Single-ended bristle brush

REF	DESCRIPTION	QTY
370101	Assorted Colors	144
370501	Red	576
370502	Blue	576
370503	Yellow	576
370504	Green	576

Benda Brush Mini

- Fine point, white bristles
- Single-ended bristle brush

REF	DESCRIPTION	QTY
370111	Assorted Colors	144
370601	Red	576
370602	Blue	576
370603	Yellow	576
370604	Green	576



Actual Size

DELIVERY SYSTEMS

Benda® Micro: Precision Disposable Micro Fiber Applicators

Perfect when you need only a drop.

Benda Micro Applicators achieve precision placement in confined spaces. The unique Benda Micro head bends to the angle you need for single-drop application of bonding agents, hemostatic solutions, cavity liners and other low-viscosity liquids. Select from our single-ended or double-ended “twin” styles for precise application into cavity preps, post holes and root canals. Both styles feature **non-linting fibers** and are **non absorbant**. They are perfect for scrubbing with a wider handle for easier pick-up and manipulation. Benda Micros bend to any angle with no bounce back and are available in single colors or in an assorted pack. They come in 3 sizes for small, medium, and large application needs. **Made in the USA.**



Actual Size



Benda Micro Regular

- Regular point (2.0 mm), white tip
- Single-ended micro applicator
- Works with Benda® Matic Dispenser

REF	DESCRIPTION	QTY
380005	Assorted Colors (100 of each color)	400
380014	Blue	576
380015	Green	576
380016	Purple	576
380017	Silver	576



Actual Size



Benda Micro Fine

- Fine point (1.5 mm), white tip
- Single-ended micro applicator
- Works with Benda Matic Dispenser

REF	DESCRIPTION	QTY
380006	Red and Yellow (200 of each color)	400
380012	Yellow	576
380013	Red	576



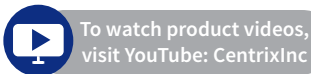
Actual Size



Benda Micro Extra-Fine

- Extra-fine point (1.0 mm), white tip
- Single-ended micro applicator
- Works with Benda Matic Dispenser

REF	DESCRIPTION	QTY
380033	Light Green and Ivory (200 of each color)	400
380029	Light Green	576
380030	Ivory	576



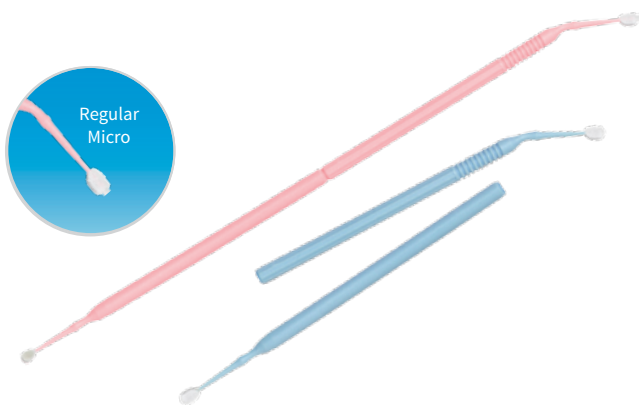
Benda® Twin: Double-ended, Disposable Brushes and Micro Fiber Applicators



Benda Twin

- Double-ended bristle brush, snap-apart handle
- Regular point, black and white bristles
- Ideal for 2-step procedures
- Extended reach
- **Made in the USA**

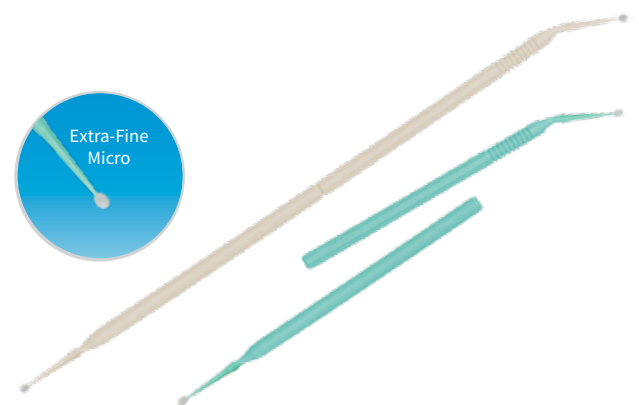
REF	DESCRIPTION	QTY
370105	Pink	100
370106	Blue	100
370107	Pink	200
370108	Blue	200



Benda Micro Twin

- Double-ended micro applicator, snap-apart handle
- Regular point (2.0 mm), white tip
- Ideal for 2-step procedures
- **Made in the USA**

REF	DESCRIPTION	QTY
380020	Pink	100
380021	Blue	100
380022	Pink	200
380023	Blue	200



Benda Micro Twin Extra-Fine

- Double-ended micro applicator, snap-apart handle
- Extra-fine point (1.0 mm), white tip
- Ideal for 2-step procedures
- **Made in the USA**

REF	DESCRIPTION	QTY
380027	Ivory	200
380028	Light Green	200



ORAL CARE & PREVENTION

FluoroDose®

Fluoride Varnish with Xylitol

Award-Winning Fluoride Varnish Year After Year!



DENTAL ADVISOR TOP AWARD: **FLUORIDE VARNISH**



FluoroDose was rated top Fluoride Varnish in 2015, 2016, 2017 and 2018 by *The Dental Advisor*. Clinicians love that it is smooth, not stringy or clumpy. Patients love that it stays clear so there is no tooth discoloration. FluoroDose dries in seconds upon contact with saliva and remains on the tooth for 4 to 6 hours for optimum fluoride uptake.

FluoroDose contains 5% sodium fluoride, the maximum dosage allowed in a convenient single-use Lollipop®. Each unit contains one single dose (0.3 mL) of FluoroDose plus one Benda® Brush applicator which allows you to mix the varnish prior to application, guaranteeing a consistent level of fluoride in every application. Simply peel back the cover, mix and apply. Centrix makes asepsis and post-procedural cleanup easier. No more messy gels and uncomfortable trays; no more inherent worry of fluoride ingestion.

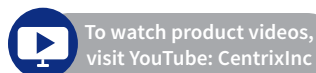
- FDA-cleared for treating dentin sensitivity.
- Unit-dose delivery for ease of use and cleanup
- Swipe-on procedure is easier and safer to use than gels and rinses
- Application is complete in less than one minute
- Available in 5 great-tasting flavors: Caramel, Bubble Gum, Mint, Cherry and Melon
- 5% sodium fluoride (NaF) or 22,600 ppm of fluoride
- Best value on the market

The ADA considers fluoride varnish to be a safe and efficacious part of a caries prevention program that includes caries diagnosis, risk assessment and regular dental care.¹

FluoroDose is lactose free, gluten free and nut free. The product is free of all dairy, egg, gluten, soy, peanut, tree nuts, tree nut derivatives, fish/shellfish and seed products. FluoroDose contains rosin, beeswax and red dye 40.

1. There are several studies on the ADA website explaining the uses of fluoride varnishes, visit: www.ada.org.

REF	DESCRIPTION	QTY
700001	Introduction Kit (8 of each flavor, 0.3 mL)	40
360137	Caramel, 0.3 mL	120
360138	Caramel, 0.3 mL	600
360139	Caramel, 0.3 mL	1200
360087	Bubble Gum, 0.3 mL	120
360077	Bubble Gum, 0.3 mL	600
360106	Bubble Gum, 0.3 mL	1200
360110	Cherry, 0.3 mL	120
360111	Cherry, 0.3 mL	600
360112	Cherry, 0.3 mL	1200
360107	Melon, 0.3 mL	120
360108	Melon, 0.3 mL	600
360109	Melon, 0.3 mL	1200
360086	Mint, 0.3 mL	120
360078	Mint, 0.3 mL	600
360105	Mint, 0.3 mL	1200
360221	Assorted (One 120-pack box of each flavor 0.3 mL)	600





REF	DESCRIPTION	QTY
360116	LolliPack, 0.25 mL	16
360120	LolliPack, 0.25 mL	64



Single-use applicator. No drip or mess!

EXPOSÉ® CARIES INDICATOR

REF	DESCRIPTION	QTY	REF	DESCRIPTION	QTY
310330	Blue, Fine, Yellow Handle	576	310334	Blue, Fine, Yellow Handle	100
310331	Blue, Extra-Fine, Ivory Handle	576	310335	Blue, Extra-Fine, Ivory Handle	100
310332	Red, Extra-Fine, Green Handle	576	310336	Red, Extra-Fine, Green Handle	100
310333	Red, Fine, Red Handle	576	310337	Red, Fine, Red Handle	100

Champ™

Pit & Fissure Sealant | Glass-Filled Acrylate Resin

Champ is a bioactive light-activated, pit and fissure sealant that does not require a bonding agent. Champ utilizes a moisture-tolerant chemistry that seals out micro-leakage for a long-lasting sealant. Simply etch, rinse, apply and cure.

Champ is packaged in our convenient single dose LolliPack®. Hygienists love it because it is easier to use than syringe-delivered sealants, with easier access to all surfaces and all areas, especially in the posterior. And, it eliminates the need for time-consuming infection control procedures - no sheaths or disinfection of syringes, no expensive brush tips, no cross-contamination. Each application contains one 0.25 mL dose of Champ sealant and one Benda® Brush applicator.

- Fluoride and phosphate release
- Single-step, brush-on application
- No bonding agent required
- Bioactive resin with antibacterial properties
- Unique moisture friendly chemistry tightly seals margins, eliminating pitting, chipping or staining
- BPA-free. No Bisphenol A (BPA), no Bis-GMA, no Bis-DMA
- Simple, disposable packaging – better inventory control, no cross-contamination and easier cleanup
- Economical – no infection control steps, low cost per use, accurate inventory control
- **Made in the USA**

Exposé®

Caries Indicator Kit | FD&C Dye in Propylene Glycol Base

Exposé is the simplest-to-use caries detector product available today. Instead of messy squeeze bottles or syringes, Exposé is pre-dried on a Benda® Micro applicator. Simply touch it to a wet tooth surface to apply. No drip or mess that can stain clothing or soft tissue. **Made in the USA.**

- **Available in 2 indicator colors:**
 - Blue:** Easier to see decay on dentin with actively bleeding preps. Differentiate between decay and pulp in deep preps. Clearly see decay on preps where dentin decay is tooth-colored.
 - Red:** Enables better visibility, so you can see decay on stained dentin. Brighter and easier to see when light is reduced in the posterior. Better color contrast on darker decayed preps.
- Perfect for minimally invasive preps; allows you to identify and remove affected tooth structure, leaving healthy enamel and dentin
- Single-use applicators makes tray set-up easy – simply place one on the tray – no syringe, no sheath, no tips to replace, no cross-contamination
- Contains an FD&C dye in a propylene glycol base
- Works by staining the by-products of carious lesions





LolloCaine® Topical Anesthetic | 20% Benzocaine Gel

LolloCaine topical anesthetic features fast-acting 20% benzocaine gel in a convenient single-use LolloPack® package. The disposable packaging reduces cross-contamination and eliminates the need for cleaning up or wiping down bulky jars. Each LolloPack contains one 0.3 mL single dose of LolloCaine gel plus one swab applicator. Simply peel back the cover, dip in the swab applicator and apply. Use wherever topical anesthesia is indicated.

- Contains 20% benzocaine gel
- Rapid onset plus great taste
- Perfect “take-home” pack to treat patients’ post-op discomfort
- Available in 4 flavors: Bubble Gum, Cherry, Mint, and Piña Colada
- **Ideal applications:**
 - Prior to local anesthetic placement
 - On denture sores
 - During rubber dam clamp placement
 - During deep scaling or root planing
 - Home care relief of oral lesions, prosthetics, orthodontic appliances and various dental procedure discomforts

HOW TO USE



1. Dip 2. Apply 3. Toss

REF	DESCRIPTION	QTY
360088	Bubble Gum, 0.3 mL	120
360090	Cherry, 0.3 mL	120
360092	Mint, 0.3 mL	120
360094	Piña Colada, 0.3 mL	120



D/Sense® Crystal™ Dual-Action Crystal Precipitate Desensitizer Gel | Oxalate and Potassium Nitrate Crystals

D/Sense Crystal is a one-step, dual-action desensitizer gel and cavity liner that is fast-acting and long-lasting. Calcium oxalate and potassium nitrate crystals penetrate deeply to occlude the tubules and seal the dentin surface with a continuous, acid-resistant complex (typically less than 3 microns thick). Great for hypersensitive patients.

- Syringe delivery with SofNeedle™ foam-tip provides accurate placement and burnishing with no dripping onto soft tissue
- Provides fast desensitizing with deep, long-lasting crystal formation
- Occludes dentinal tubules with calcium oxalate and potassium nitrate

DENTIN MAGNIFIED 2500X



Dentin before treatment with D/Sense Crystal. SofNeedle foam-tip accurately treats dentin without harming soft tissue. Dentin after treatment with D/Sense Crystal.

IDEAL APPLICATIONS:

- Before and after tooth bleaching
- On cervical erosions
- On exposed dentin surfaces
- Before or after prophylaxis, scaling, root planings

REF	DESCRIPTION	QTY
310106	D/Sense Crystal Kit: Multi-use Syringe (1.0 mL) SofNeedle 22 ga Tip	6 24

TISSUE MANAGEMENT

GingiTrac™

VPS Gingival Retraction System

GingiTrac is a medium-viscosity, vinyl polysiloxane (VPS) gingival retraction paste with 15% ammonium aluminum sulfate (alum) that gently displaces the gingiva from the tooth and stops bleeding. When used with GingiCap™ compression caps, the mechanical bite pressure of GingiCap combined with the astringent action of aluminum sulfate works to control bleeding and seepage in just minutes. GingiTrac cleans up easily and completely, without tissue trauma.

GingiTrac is compatible with all impression materials and can be used as the second cord in a 2-cord technique. And GingiTrac serves as its own preview of the final impression so you can be sure of a quality impression every time.

- Works gently, no tissue trauma or damage, and no need for cord
- Contains aluminum sulfate astringent to control bleeding and oozing
- Minimum set time of 2 minutes
- Removes cleanly in one piece, no need to rinse off
- Gives a preview of the final impression
- Digital scanning and CAD/CAM friendly, comes off clean
- Made in the USA

Your choice of two great delivery systems:

GingiTrac™ MiniMix

Disposable single-patient cartridges for one or two-unit preps

GingiTrac™ Automix Cartridges

Larger volume automix package is ideal for multiple-unit cases



GINGITRAC AUTOMIX

REF	DESCRIPTION	QTY
360101	GingiTrac Standard Kit:	
	50 mL 1:1/2:1 Automix Gun	1
	GingiTrac Cartridge (50 mL)	2
	SuperMixer™ Mixing Tip, Pink Hub	40
	Dispensing Tip	40
	GingiCap, regular-size	30
	GingiCap, large-size	30
360102	GingiTrac Plus Kit:	
	GingiTrac Cartridge (50 mL)	4
	SuperMixer Mixing Tip, Pink Hub	80
	Dispensing Tip	80
	GingiCap, regular-size	60
360100	GingiTrac Refill Kit:	
	GingiTrac Cartridge (50 mL)	2
	SuperMixer Mixing Tip, Pink Hub	10
	Dispensing Tip	10

GINGITRAC MINIMIX

REF	DESCRIPTION	QTY
360068	GingiTrac MiniMix Starter Kit:	
	Snub-Nose Snap-Fit Gun	1
	MiniMix Cartridge (1.0 mL)	24
	MiniMix Tip	24
	GingiCap, regular-size	20
	GingiCap, large-size	20
360069	GingiTrac MiniMix Refill Kit:	
	MiniMix Cartridge (1.0 mL)	48
	MiniMix Tip	48
	GingiCap, regular-size	40
	GingiCap, large-size	40

SUGGESTED ACCESSORIES

REF	DESCRIPTION	QTY
910632	SuperMixer Mixing Tip, Pink Hub	50
290017	Access® Automix Needle Tip, 18 ga Yellow	144
360036	50 mL 1:1/2:1 Automix Gun	1
360006	Access BLUE® Bite Registration Cartridge (50 mL)	2
910630	MiniMix Tip	10



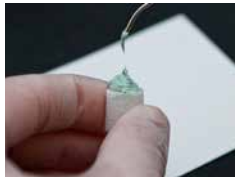
To watch product videos, visit YouTube: [CentrixInc](https://www.youtube.com/CentrixInc) & [dentalproductshopper.com](https://www.dentalproductshopper.com)

TISSUE MANAGEMENT

GINGITRAC™ AND GINGICAP™ SINGLE-UNIT RETRACTION TECHNIQUE



1. Select appropriate GingiCap.



2. Dispense GingiTrac into the GingiCap.



3. Dispense GingiTrac around the prep.

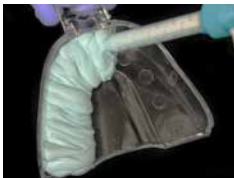


4. Have patient bite down gently on GingiCap. Wait a minimum of 2 minutes and remove.

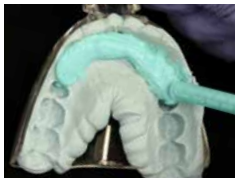


5. Open, dry surface. Ready for impression.

GINGITRAC MULTIPLE-UNIT RETRACTION TECHNIQUE



1. Express Access BLUE® into a rigid plastic tray. Take initial impression to create a matrix.



2. Dispense GingiTrac into the Access BLUE.



3. Dispense GingiTrac around the prep.



4. Have patient bite down gently. Wait a minimum of 2 minutes and remove.



5. Ready for final impression.



Large



Regular

GingiCap™ Compression Caps

GingiCap provides the pressure needed to push retraction pastes into the sulcus, displacing tissue. GingiCap works with GingiTrac, Access® Edge and AccessFLO® retraction pastes.

- Closed-cell foam compression cap easily adapts to any tooth, any prep shape
- Use with single unit preps
- Available in 2 sizes: regular and large
- May be trimmed and shaped to customize

GINGICAP REFILL KITS

REF	DESCRIPTION	QTY
360103	Regular-Size Refill Kit:	
	GingiCap, regular size	40
	SuperMixer™ Mixing Tip, Pink Hub	40
360104	Large-Size Refill Kit:	
	GingiCap, large size	40
	SuperMixer Mixing Tip, Pink Hub	40
360056	Assorted Refill Kit:	
	GingiCap, regular size	30
	GingiCap, large size	30

SUGGESTED ACCESSORY

REF	DESCRIPTION	QTY
910630	MiniMix Tip	10

Access® Edge

High-Viscosity Kaolin Clay-Based Retraction Paste

Access Edge unit-dose tips fit in any Centrix C-R® syringe or gun.



Access Edge is a high-viscosity, kaolin clay-based gingival retraction paste. It contains kaolin clay, to gently separate the gingiva from the tooth, plus aluminum chloride to help control bleeding and prevent seepage. Access Edge is injected subgingivally or packed around the tooth, then left in place for a minimum of 2 minutes. As the paste dries, Access Edge creates gentle, yet effective retraction to open the sulcus. The aluminum chloride and kaolin clay act to control bleeding and prevent seepage, keeping the sulcus dry.

- Atraumatic gingival retraction without packing cord
- Dual astringent/hemostatic action - 15% aluminum chloride and kaolin clay
- Can be used as a second cord in a “2-cord technique”
- Removes easily and rinses away
- Convenient prefilled unit-dose tips eliminate cross-contamination
- Individually packaged in foil pouches to keep material fresh
- Can be used anytime a hemostatic is indicated
- Made in the USA

REF	DESCRIPTION	QTY
360113	Access Edge 15-Pack Kit:	
	Prefilled Tip	15
	Dispensing Tip	30
	GingiCap, regular size	10
	GingiCap, large size	10
360114	Access Edge 60-Pack Kit:	
	Prefilled Tip	60
	Dispensing Tip	120
	GingiCap, regular size	30
	GingiCap, large size	30

AccessFLO®

Low-Viscosity Flowable Kaolin Clay-Based Retraction Paste



AccessFLO is a low-viscosity, flowable kaolin clay-based gingival retraction paste. Similar to Access Edge, it contains the active ingredients kaolin clay and aluminum chloride to help control bleeding and prevent seepage. A unique prefilled unit-dose tube allows for easier placement of material in and around the sulcus.

- Convenient prefilled unit-dose tube: no mixing, no bulky cartridges or syringes
- Dual astringent/hemostatic action - 15% aluminum chloride and kaolin clay
- Retracts quickly, in 2 minutes
- Rinses away and removes easily
- Non-traumatic gingival retraction without packing cord
- Can be used as the second cord in a “2-cord technique”
- Individually packaged in foil pouches to keep material fresh
- Can be used anytime a hemostatic is indicated
- Made in the USA

REF	DESCRIPTION	QTY
360122	AccessFLO 15-Pack Kit:	
	Prefilled Tube	15
	GingiCap, regular size	10
	GingiCap, large size	10
360123	AccessFLO 60-Pack Kit:	
	Prefilled Tube	60
	GingiCap, regular size	30
	GingiCap, large size	30

SUGGESTED ACCESSORIES

REF	DESCRIPTION	QTY
140000	Mark II™ Snap-Fit™ Syringe	1
130651	Snub Nose Snap-Fit Gun	1
130650	Snap-Fit Gun	1



Access Crown®

Bis-Acryl Composite for Provisional Crowns & Bridges

Access Crown is the easiest and fastest bis-acryl temporary resin material. Its unique elastic polymerization characteristics (“memory”) enable it to be pulled from undercuts or non-parallel preps and to return to its original form. Its high flexural strength provides superior performance during function.

- More shades, speed, strength and savings
- Ideal handling characteristics: reaches elastic state and ready to remove from mouth in less than 60 seconds
- Low shrinkage, low heat generation
- High compressive flexural strength
- MMA-free: no unpleasant taste or smell
- Easily repaired with flowable composite
- Enhanced color stability for less staining
- Radiopaque for diagnostics
- High polishability
- Fits 1:1 automix cartridge system
- More homogenous mix for stronger provisionals
- Reduced waste yields more units per cartridge



7 SHADES TO TEMPORIZE ANY SMILE

Each kit contains one 1:1 (76 g) cartridge and 10 SuperMixer™ Mixing Tips.

REF	SHADE	QTY	REF	SHADE	QTY
360035	A1	1	360031	B1	1
360034	A2	1	360038	BL (Bleach)	1
360030	A3	1	360037	C2	1
360029	A3.5	1			

REF	DESCRIPTION	QTY
910626	SuperMixer™ Mixing Tips, Blue Hub	50
360036	50 mL Automix Gun	1
310521	Access® Temp Cement	1
310157	NoMIX® Temp Cement Patient Take-Home Display Kit	1
310520	NoMIX® Temp Cement Starter Kit	1
330531	VersaFlo® Single Syringe A2	1
310280	NoCord™ VPS Intro Trial kit	1

EASY TEMPORIZATION



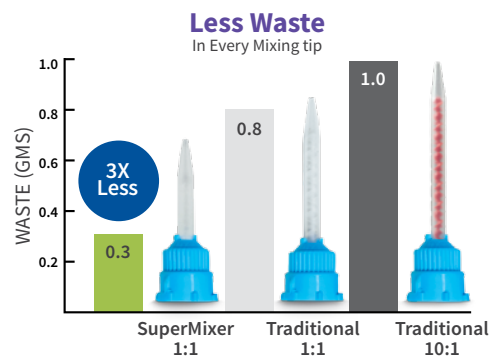
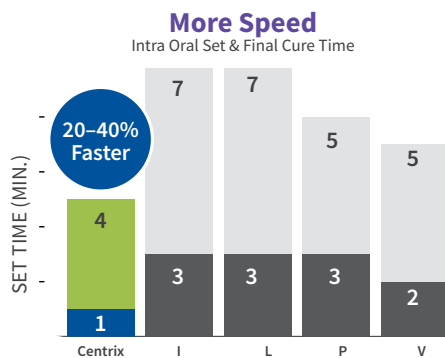
Any Case, Any Size C&B or Veneer.

Easy Expression, Less Waste, More Savings.

40% Faster Set, Easy Removal, Even with Undercuts.

Easy to Trim, More Strength, Ready for Cementation.

Natural Esthetics, High Fluorescence, Superior Function.





Actual Size



Take-Home Display Kit



Easy-to-follow, step-by-step instructions included.



In-Office Syringe



Take-Home Applicator

NoMIX®

The Only Moisture-Activated Temporary Cement

NoMIX is a single-component, moisture-activated temporary cement ideal for short-term applications. It is fully compatible with acrylic, composite, PFM and ceramic materials. NoMIX requires no mixing whatsoever. Simply apply to the inside of the provisional and affix to a moist tooth surface. NoMIX expands slightly upon setting for a tight seal, and is easy to clean off prior to permanent cementation.

NoMIX take-home applicators eliminate those late-night “emergency” calls or unscheduled office visits that disrupt the day. If a temp dislodges, patients can use professional-strength NoMIX and reseat the unit.

- Easy to use, dispense, clean and remove from prep
- Low film thickness, harder set.
- Syringe delivery for chairside application
- Take-Home applicators for patient use emergencies
- Expands slightly upon setting for a tight margin seal
- Calcium sulfate, zinc oxide cement
- Eugenol-free so it won’t interfere with resin placements

REF	DESCRIPTION	QTY
310520	NoMIX Temp Cement Starter Kit: 1 mL Prefilled Syringe Syringe Tip Unit-Dose Take-Home Applicator (0.50 g)	6 30 24
310157	NoMIX Temp Cement Take-Home Display Kit: Unit-Dose Take-Home Applicator (0.50 g)	50
290040	NoMIX Refill Kit: 1 mL Prefilled Syringe	12
640002	Syringe 22 ga Tip	30

Access®

Automix Temporary Cement

Access Automix Temporary Cement is the perfect choice for longer-term temporary use. The automix formula sets to a permanent semi-elastic state for better resiliency, minimal cleanup and easy removal. **Eugenol-free**, Access Automix Temporary Cement won’t interfere with bonding agents or other resin materials that may be used in the final restoration. It’s the perfect cement for use with Access Crown® and bis-acryl composite resin.

- Low film thickness, flows, semi-elastic set
- Safe, simple adhesion and easy removal
- Calcium hydroxide provides bacteriostatic effect on mold
- Aesthetically pleasing shade match
- Delivers the perfect mix every time

REF	DESCRIPTION	QTY
310521	Access Kit: 5 mL Automix Cartridge Mixing Tip	1 10



The Complete Tempit® Line

Three Essential Temporary Filling Materials. One Delivery System.

Whether your need is for access cavity sealing, temporary fillings, or temporization prior to inlay and onlay restorations, Centrix has a specific Tempit formula to give you optimum results. Tempit prefilled tips let you inject direct-to-the-prep. No more messy spatulation, squeeze tubes or cross-contaminating jars.



Tempit®

Moisture-Activated Temporary Filling and Sealing Material

- Calcium sulfate and zinc oxide
- Ideal for sealing endo access openings and for short term temporary fillings
- Moisture-activated, sets in 5 minutes
- Expands slightly when set, seals out microleakage and bacterial ingress



Tempit® L/C

Light-Activated, Flexible Resin Temporary Restorative Material

- Light curing, single component composite resin for temporary restorations
- Perfect for indirect restorations, inlays/onlays
- Seals implant screw access openings
- Covers sharp orthodontic brackets
- Sets firm yet flexible
- Easily removed with an explorer without damaging the margins, no bur required.
- Light-activated, sets in 20-40 seconds
- No etching or bonding agent required

Tempit® Ultra-F

Light-Activated, Rigid Intermediate Restorative Material with Fluoride

- Microfilled polymer resin
- Rigid, harder-wearing material for longer-term temporaries
- High compressive strength for bruxism patients
- Ideal for tooth-colored restorations in deciduous teeth
- Non-eugenol formula with fluoride release
- Less solubility than reinforced ZOE intermediate restorative material
- Light-activated, sets in 40-60 seconds
- No etching or bonding agent required

Tempit® Essentials

1. Tempit
2. Tempit L/C
3. Tempit Ultra-F

Three proven temporary filling and sealing materials for every temporary clinical case.

3 PRODUCTS IN ONE KIT!



REF	DESCRIPTION	QTY
310060	Tempit Prefilled Tip (0.35 g)	30
310063	Tempit L/C Prefilled Tip (0.25 g)	30
310064	Tempit Ultra-F Prefilled Tip (0.20 g)	30
310065	Tempit Ultra Prefilled Tip (0.20 g) (without Fluoride)	30

REF	DESCRIPTION	QTY
310067	Tempit Essentials: Tempit (0.35 g) Tempit L/C (0.25 g) Tempit Ultra-F (0.20 g)	10 10 10

SUGGESTED ACCESSORY

REF	DESCRIPTION	QTY
130650	Snap-Fit™ Dispensing Gun	1

LIGHT CURE DATA	TEMPIT L/C	TEMPIT ULTRA-F
Minimum Light Intensity (mV/cm ²)	500	600
Spectral Wavelength (nm)	400 - 460	400-525
*Curing Time @ min. light intensity	20 - 40 sec	40 - 60 sec

*Dependent on light intensity. Check with light manufacturer for specific recommendations.

RESTORATIVE

Encore® D/C

Dual-Cure Core Buildup Composite

Encore D/C is a dual-cure composite core buildup material that enables you to build up just the coronal core or to fabricate an integrated composite post and core that bonds the post, tooth and core together into an integrated monobloc. Deliver Encore D/C direct to the bottom of the post hole with our exclusive needle tip. The non-slumping formula stays where you place it, often eliminating the need to use a matrix/core-form and the material can be light-activated in order to accelerate the set. Encore D/C dual-cure formula speeds up your procedures and ensures complete depth of cure, regardless of depth or placement of the final restoration. Light-cure for 20 seconds to accelerate the setting and Encore D/C's exclusive dual-cure mode will complete the full cure.

And Encore D/C is designed to help protect the tooth. Under well-designed restorations, Encore D/C provides superior strength and load distribution. With physical properties similar to dentin, Encore D/C's fail-safe protection enables it in extreme situations to give way before dentin and the tooth can fail. **Made in the USA.**

- Won't slump, stays where placed
- Superior core buildup material that ensures completely cured materials, structural integrity plus ease of use
- Mixing Tip delivers material to bottom of the post space
- Cuts like dentin to reduce ditching
- Radiopaque
- Contains fluoride

Compressive strength 222 MPa
 Flexural strength 110 MPa
 Diametral tensile strength 48 MPa
 Light-activated depth of cure 2 mm 40 seconds
 Polymerization Shrinkage testing Encore D/C MiniMix 1.4%
 Encore D/C in 25 mL cartridge 2.8%

Two great delivery methods to meet the needs of your practice and your patients:

Encore® D/C MiniMix®

Our most popular format, the MiniMix unit-dose technology eliminates waste and cross-contamination concerns. The smaller size is more easily maneuvered in the mouth, while the NeedleTube™ mixing tip enables easy application down canals in second and third molars. Patient-friendly, small format is less threatening and more comfortable for sensitive patients.

Encore® D/C Automix

Standard 25 mL automix cartridge.

ENCORE D/C MINIMIX

Kits include single-dose cartridges (12 or 36) and SuperMixer™ Mixing Tips (24 or 72).

REF	DESCRIPTION	QTY
310254	Natural, 0.5 mL	36
310255	Contrast Blue, 0.5 mL	36
310129	Natural, 0.5 mL	12
310130	Contrast Blue, 0.5 mL	12

ENCORE D/C MINIMIX SUGGESTED ACCESSORIES

REF	DESCRIPTION	QTY
130651	Snub Nose Snap-Fit Gun	1
910630	MiniMix Tip	10



Shade Reference:



HIGH-EFFICIENCY SUPERMIXER™
27%
 LESS WASTE

ENCORE D/C AUTOMIX

25 mL Kit includes: 1 cartridge, 10 SuperMixer™ Mixing Tips, 10 dispensing tips

REF	DESCRIPTION	QTY
310150	Natural with fluoride, 25 mL	1
310152	Contrast Blue with fluoride, 25 mL	1

ENCORE D/C AUTOMIX SUGGESTED ACCESSORIES

REF	DESCRIPTION	QTY
310156	25 mL 1:1/2:1 Automix Gun	1
910628	SuperMixer Mixing Tip, Yellow Hub	50
290025	Automix Tips, 18 ga green	144
910631	SuperMixer Mixing Tip Combo, Yellow Hub with 18 ga Tip	50

Connexio®

Dual-Cure, Self-Etch Bond

Connexio dual-cure 7th-generation adhesive is the perfect complement to Encore D/C core material, providing dual curing deep in canal, right to the bottom of the post space for a completely polymerized, integrated tooth/core/post monobloc. The self-etching ability of Connexio provides strong dentin bonds without the need for a separate acid-etching step. And, Connexio is nanoparticle reinforced to provide bond strengths that last longer.

Connexio is designed for use with all types of composite resins – self-cure, light-cure, or dual-cure and it tolerates residual moisture. It is the optimal bonding agent for dual cure composite materials, like Encore D/C.

- Dual-cured self-etch adhesive for direct and indirect restorations for all self-, light- and dual-cured resin materials
- Direct or indirect applications
- Nanoparticle reinforced
- Permanent, tight margins
- Equivalent adhesive properties to total-etch bonds
- Uses water as solvent (not acetone or ethyl alcohol); more tolerant of humidity than other adhesives
- Greater rate of monomer conversion due to self-cure activation as part of dual cure material

Enamel bond strength 24.5 MPa
(on unetched enamel; selective etching will increase enamel bond strength)
Dentin bond strength..... 39.3 MPa

We recommend selective etching of enamel for maximum bond strengths.



REF	DESCRIPTION	QTY
310270	Connexio Kit: (3 mL Part A & 3 mL Part B)	1
Spectra Wavelength		400 - 480 nm
Light Intensity (mW/cm ²)		Polymerization < 0.6 Blue Light
Light Cureable Cure Time		10 seconds

DUAL-CURE MATERIAL

DUAL-CURE BOND



= love

Integrated tooth, post & core monobloc

To watch product videos, visit YouTube: CentrixInc

RESTORATIVE

Encore®

Self-Cure Core Buildup Composite

Our original core buildup material!



Shade Reference:



- Flows easily through an AccuDose® NeedleTube®
- Non-slumping formula requires no matrix or core-form
- Cuts like dentin to reduce ditching
- Radiopaque
- 50-gram kit
- Choose with or without fluoride
- **Made in the USA**

Compressive strength206 MPa

Diametral tensile strength45 MPa

Flexural strength155 MPa

Kits include: 1 (25 g) Base + 1 (25 g) Catalyst, 3 mL Connexio Part A, 3 mL Connexio Part B, 25 20 ga NeedleTubes, 10 Micro Applicators, Mixing Pad and 50 Spatulas.

REF	DESCRIPTION	QTY
310070	White with fluoride, 25 g Base, 25 g Catalyst	1
310076	Natural with fluoride, 25 g Base, 25 g Catalyst	1

Encore® AF

Advanced Formula Self-Cure Core Buildup Composite



Shade Reference:



- Increased compressive and tensile strengths
- Flows easily through an AccuDose NeedleTube
- Smoother and creamier material
- Non-slumping formula requires no matrix or core-form
- Cuts like dentin to reduce ditching
- Radiopaque
- 50-gram kit
- Contains fluoride
- **Made in the USA**

Compressive strength298 MPa

Diametral tensile strength47 MPa

Flexural strength149.2 MPa

Kits include: 1 (25 g) Base + 1 (25 g) Catalyst, Mixing Pad and 50 Spatulas.

REF	DESCRIPTION	QTY
310093	White with fluoride, 25 g Base, 25 g Catalyst	1
310094	Natural with fluoride, 25 g Base, 25 g Catalyst	1

RESTORATIVE

SuperCure®

Light-Activated Core Buildup Composite

Build a high-strength core faster with SuperCure, light activated composite core buildup material. Inject direct from the SuperCure syringe tip into the prep. Light activate to a dentin-like hardness for immediate prep. Easier, faster, better.

SuperCure is available in two high performance formulations.

SuperCure Original

With barium borosilicate glass filler, cuts like dentin.

SuperCure - Q

Is reinforced with quartz glass filler to cut harder than dentin.

Both formulations are packaged in Centrix exclusive direct-to-the-prep unit-dose tips (25 g or 50 g) with enough material to meet the needs of most buildups.

- SuperCure stacks beautifully, without slump, so matrices or coreforms are not required
- Original formula of barium borosilicate glass filler cuts like dentin
- Q-formula is reinforced with quartz glass filler to cut harder than dentin
- Fast light-activation and high depth of cure: 8.9 mm in 40 seconds
- Disposable tips for maximum asepsis
- Non-slumping formula requires no matrix
- Prefilled tips eliminate mixing, cleanup and waste
- Radiopaque

Onyx™

40% Phosphoric Acid Etching Gel



Onyx is a viscous 40% phosphoric acid etchant that stays where you place it, does not run and rinses away cleanly and completely. The high-contrast black gel makes it easier to see where you have etched, and where you haven't. Use with any bonding system or technique that requires etching: selective etch or total etch. **Made in the USA.**

- Highest strength, most effective etchant
- Black silicon carbide particles provide the greatest contrast, making it easy to rinse away completely
- No dye – no chance of staining porous surfaces
- Particles can be agitated on tooth to mechanically scrub and clean the surface
- For use on dentin or enamel

REF	DESCRIPTION	QTY
310053	1.2 mL Syringe (with 30 needle tips)	6
310054	1.2 mL Syringe (with 50 needle tips)	15
310052	Onyx Etch (tips not included)	25

SUGGESTED ACCESSORY

640001	22 ga Luer-Lock Needle Tip	100
--------	----------------------------	-----



Shade Reference:



Compressive strength235 MPa
Diametral Tensile strength50 MPa
Flexural strength87 MPa
Filler typeBarium Borosilicate Glass
Cure Depth, (ADA), 40 Seconds 8.9 mm



Compressive strength207 MPa
Diametral Tensile strength87 MPa
Flexural strength104 MPa
Filler type Quartz Glass
Cure Depth, (ADA), 40 Seconds 8.9 mm

SUPERCURE

REF	DESCRIPTION	QTY
310140	Natural, 0.25 g Tip	30
310142	Contrast Blue, 0.25 g Tip	30
310141	Natural, 0.50 g Tip	30
310143	Contrast Blue, 0.50 g Tip	30

SUPERCURE -Q

REF	DESCRIPTION	QTY
310146	Natural, 0.50 g Tip	30
310147	Contrast Blue, 0.50 g Tip	30

SUGGESTED ACCESSORY

REF	DESCRIPTION	QTY
130650	Snap-Fit Gun	1

LIGHT CURE DATA	SUPERCURE	SUPERCURE -Q
Minimum Light Intensity (mV/cm ²)	600	600
Spectral Wavelength (nm)	390 - 490	390 - 490
*Curing Time @ min. light intensity	20 - 60 sec	20 - 60 sec

*Dependent on light intensity. Check with light manufacturer for specific recommendations.

RESTORATIVE

RapidCore®

Self-Cure Core Buildup Composite

Complete depth of cure, without light activation, in only two minutes. Enables strong core buildups that extend deep into the canal. Simply inject RapidCore through the exclusive Automix NeedleTube® and you are ready to cut the prep in two minutes. RapidCore's advanced thixotropic formula flows smoothly through the needle yet will not slump, making core forms and matrix bands unnecessary. Achieve high bond strength when used with a compatible bonding agent. **Made in the USA.**

RapidCore® Automix

Standard automix 25 mL cartridges.

- Two minute set-time reduces chair time by 50%
- Unlimited depth-of-cure. No light required
- Mixing tip delivers material to the bottom of the post bottom
- Non-slumping formula requires no matrix or coreform
- Cuts like dentin to reduce ditching
- Radiopaque
- Contains fluoride
- Compatible with all C-R® syringes and guns

Working time (room temperature) 60 seconds
 Set time in mouth 2 minutes
 Compressive strength 248 MPa
 Flexural strength 125 MPa
 Diametral tensile strength 44 MPa
 Water uptake Less than 0.02mg/cm2, 7 days at 37°C

RAPIDCORE AUTOMIX

25 mL Kit includes: 1 cartridge, 10 SuperMixer™ Mixing Tips, 10 dispensing tips

REF	DESCRIPTION	QTY
310136	White, 25 mL	1
310137	Natural, 25 mL	1

RAPIDCORE AUTOMIX SUGGESTED ACCESSORIES

REF	DESCRIPTION	QTY
310156	25 mL 1:1/2:1 Automix Gun	1
910631	SuperMixer™ Combo Mixing Tip, Yellow Hub with Tip	50



Shade Reference:



Natural

White

LubeCube®

Composite Instrument Cleaner & Lubricator

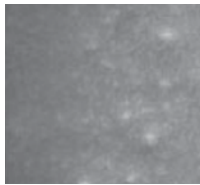
LubeCube makes your favorite composite sculpting instruments “non-stick”, for easier contouring, smoother finishing, and no “pull-back”. The result is an instrument that glides over the composite surface without friction or “chatter”. LubeCube helps you create a super-smooth composite surface with ease!
Made in the USA.

- Opaque foam cube with unfilled light-activated resin monomer
- Cleans conditions and lubricates instruments
- Compatible with all light-activated and dual-cure composites
- No alcohol, silicone, or solvents
- Makes any composite instrument “non-stick”
- Low-cost, single-use and disposable

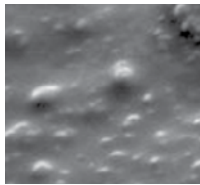


REF	DESCRIPTION	QTY
310108	LubeCube	72

LIGHT-ACTIVATED COMPOSITE AT 750X MAGNIFICATION



With LubeCube



Without LubeCube

HOW TO USE



1. Peel off bottom backing and place in desired location (hand, bib, tray, etc.).

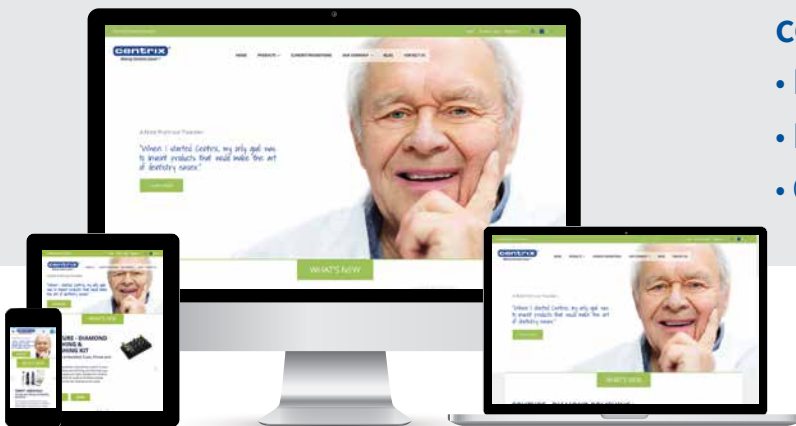


2. Slide instrument tip thru slit, to clean and lubricate.

Visit our **enhanced website!**

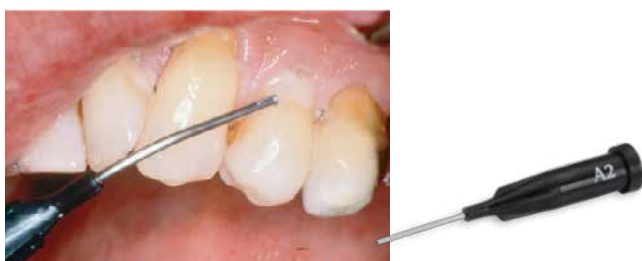
centrixdental.com

- Easy to navigate
- Mobile friendly
- Quick access to your favorite products



VersaFlo®

Light-Activated Flowable Composite Resin



VersaFlo is a light-activated flowable composite with a wide range of uses including Class V restorations, liners, bases, temporary crown repairs, veneer cementation, and pit and fissure sealing. VersaFlo is packaged in a prefilled, single-use, disposable NeedleTube®, or in 2 g syringes. **Made in the USA.**

- Single dose, no cross-contamination
- Low viscosity for excellent flow
- Hybrid formula provides strength and high polishability
- Disposable, single-dose tips ensure maximum asepsis
- Available in 3 VITA® shades: A1, A2, A3
- Radiopaque

Compressive strength242.6 MPa
 Diametral tensile strength43 MPa
 Flexural strength96.6 MPa
 Filler % by weight/volume76%/53%

VERSAFLO SINGLE SYRINGE

Each 2 g syringe by shade:

REF	SHADE
330530	A1, 2 g
330531	A2, 2 g
330532	A3, 2 g

VERSAFLO SYRINGE KIT

Contains 6 (2 g) syringes plus 30 applicators by shade:

REF	SHADE
330520	A1, 2 g
330521	A2, 2 g
330522	A3, 2 g

VERSAFLO NEEDLETUBE

Single-dose, prefilled, NeedleTubes (jar of 16 x 0.2 g) by shade:

REF	SHADE
330501	A1, 0.2 g
330502	A2, 0.2 g
330503	A3, 0.2 g

VERSAFLO NEEDLE TIPS

REF	QTY
330540	30 Applicator Needle Tips (20 ga)

VersaLite®

Light-Activated Hybrid Composite Resin



VersaLite light-activated hybrid composite is ideal for use in all direct restorations. Featuring high compressive strength and enamel-like polishability, VersaLite is non-sticky and highly sculptable. Packaged exclusively in prefilled, single-use, disposable tips, VersaLite offers outstanding restorative results at an economical price. **Made in the USA.**

- High viscosity, non-sticky formula for optimum handling
- Hybrid formula provides strength and polishability
- Single-dose, prefilled tips for maximum ease of use and asepsis
- Dispenses easily, adapts to cavity wall
- Fast, deep (2 mm), light activation in only 20 seconds
- Available in 4 VITA® shades: A1, A2, A3, C3
- Radiopaque

Compressive strength273 MPa
 Diametral tensile strength45 MPa
 Filler % by weight/volume82%/66%

VERSALITE TIPS

Single-dose, prefilled tips (jar of 20 x 0.25 g) by shade:

REF	SHADE
330600	A1, 0.25 g
330601	A2, 0.25 g
330610	A3, 0.25 g
330609	C3, 0.25 g

LIGHT CURE DATA

	VERSAFLO	VERSALITE
Minimum Light Intensity (mV/cm ²)	500	600
Spectral Wavelength (nm)	400-525	400-525
*Curing Time @ min. light intensity	20 sec	30 - 60 sec

*Dependent on light intensity. Check with light manufacturer for specific recommendations.

*Not a trademark of Centrix, Inc.

Glu/Sense™

Dentin Pre-Treatment Desensitizer Gel | HEMA/Glutaraldehyde Desensitizer

Glu/Sense™ HEMA/Glutaraldehyde desensitizer reduces or eliminates post-operative sensitivity by penetrating and sealing dentin tubules and precipitating proteins under restorations. Its no-drip formula provides control and accuracy during placement because it stays where it's placed. The exclusive SofNeedle™ with its foam tip enables easy and exact placement and complete coverage of dentin. With its 35% HEMA/5% Glutaraldehyde gel formulation, Glu/Sense acts in seconds to seal out post-op sensitivity. It is compatible with most cements and dentin bonding agents. On etched enamel, Glu/Sense acts as a “wetting agent” helping to prevent collagen fibers from collapsing.

- Treats and seals dentin tubules to prevent post-op sensitivity
- Syringe delivery with SofNeedle foam-tip provides accurate placement with no dripping onto soft tissue
- When used under restorations, effect is permanent.

IDEAL APPLICATIONS

- Under direct composite restorations with bonding systems
- Under inlays, onlays, crowns and veneers
- Under amalgam restorations
- **Made in the USA**



REF	DESCRIPTION	QTY
310122	Glu/Sense Kit: Multi-use syringe (1.0 mL) SofNeedle 22 ga Tip	6 60

Absolute™

Self-Adhesive Resin Cement

Absolute is a self-etching, self-adhesive, dual-cured, fluoride-releasing resin luting cement. It's ideal for crowns, bridges, inlays, onlays, and prefabricated or cast metal or fiber posts. No etching, priming or bonding required. Absolute reduces the number of clinical steps and minimizes chair time. Easy to use, Absolute produces an excellent bond to most dental materials. The auto-mix, dual-syringe delivery system eliminates hand mixing and can be dispensed directly into the prep. **Made in the USA.**

- Radiopaque for easy identification
- Easy cleanup
- Ideal film thickness ensures the restoration is completely seated

Self-cure: bond strength 3.4 MPa
 Light-cure: bond strength 9.7 MPa
 Diametral tensile strength 34 MPa
 Compressive strength 212 MPa
 Flexural strength 42 MPa
 Film thickness22 µm
 % filled (weight/volume) Base: 60/36 Catalyst: 62/40
 Average Particle Size Base: 1.0 µm Catalyst: 3.5 µm



HOW TO USE

1. Remove temporary restoration and residual cement.
2. Fill restoration with Absolute.
3. Seat the restoration.
4. Light cure for 3-5 seconds (to aid in cement removal).
5. Remove excess cement.
6. Light-cure for 20-30 seconds.

REF	DESCRIPTION	QTY
	Opaque or Translucent Kits Contain:	
	Dual-Syringe (Base/Catalyst 8 g mixed)	1
	Automix Tip	15
310113	Opaque Kit	1
310114	Translucent Kit	1

FINISHING & POLISHING

Couture™ Diamond Polisher Cups and Points

Achieve Ultra High Gloss in Half the Time

Couture Diamond Cups and Points with **Applied Diamond Technology (ADT)** produce a superior gloss effect with maximum surface brilliance. Highly-filled with fine diamond abrasives to create an ultra-smooth surface that delivers enhanced esthetics, while limiting the adherence of plaque and bacteria and the subsequent development of gingivitis and periodontal disease. ADT has the additional effect of enhancing the performance of the polishers to enable you to achieve your final polish in only two steps, compared to other systems that require 3 or 4 steps.

FEATURES

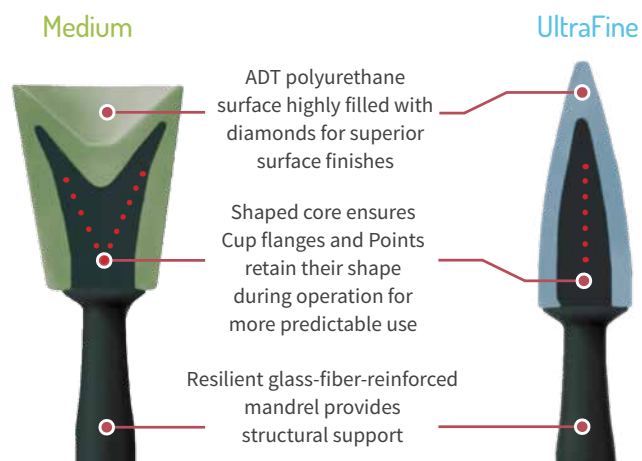
- Unique silicone matrix filled 50% by weight with diamond particles to produce superior gloss and smoothness
- Only 2 grits needed:
 - **Medium Grit** (60 µm avg. particle size) for initial refining
 - **UltraFine Grit** (5 µm avg. particle size) for final, high-gloss polish
- Extremely narrow particle size distribution range for consistent, uniform surface finishes
- Unique design gives structural integrity
- Autoclavable for multiple uses

PRACTICAL TIPS

- Use copious water spray to minimize friction heat build up
- Apply feather-light pressure to instruments
- Use slow speeds between 8,000 and 20,000 RPMs maximum



Points retain their shape even in fissures with virtually no distortion.



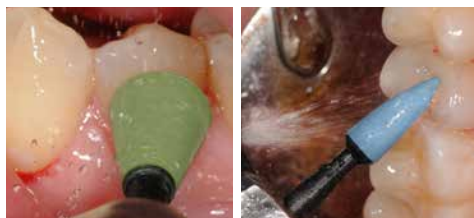
Couture™ Diamond Finishing & Polishing Kit

Unique Designs. Applied Diamond Technology. Easy-To-Use. Superior Results.

Achieve highly esthetic restorations, custom to each patient. Our Advanced Finishing and Polishing Cups, Points and Brushes are highly-loaded with ultrafine diamond particles for superior finished surfaces providing more life-like reflectance and luster.



REF	DESCRIPTION	QTY
390001	Couture Diamond Finishing & Polishing Kit:	
	Medium Grit (Green) Diamond Finishing Cup	3
	Medium Grit (Green) Diamond Finishing Point	3
	UltraFine Grit (Blue) Diamond Polishing Cup	3
	UltraFine Grit (Blue) Diamond Polishing Point	3
	Diamond Polishing Brush	3



CUPS AND POINTS REFILLS

REF	DESCRIPTION	QTY
390002	Couture Diamond Finishing Cup (Green), Medium	6
390003	Couture Diamond Finishing Point (Green), Medium	6
390004	Couture Diamond Polishing Cup (Blue), UltraFine	6
390005	Couture Diamond Polishing Point (Blue), UltraFine	6

FINISHING & POLISHING

Couture™ Diamond Polishing Brush

Versatile, Safe Brushes Produce High-Gloss Polish

Couture Polishing Brushes with **Applied Diamond Technology (ADT)** are versatile, one-step polishing instruments that produce high-gloss polishing of concave and convex tooth surfaces. The cellulose filaments are impregnated with ultrafine diamond abrasives to produce an ultra-smooth tooth surface, a lustrous shine and a surface that limits bacteria and plaque adherence. When used dry, the cellulose filaments are rigid for aggressive polishing of the tooth surface. When used wet, the cellulose filaments become flexible for atraumatic polishing of surfaces adjacent to the gingiva.



Soft and supple when wet to protect gingiva

POLISHING BRUSH FEATURES

- Diamond-impregnated cellulose filaments for a brilliant lustrous polish (-35% filled avg. wt.)
- Adaptable to all tooth morphology
- Complete final polishing in less than 15 seconds
- Use wet for atraumatic polishing near gingiva
- Limits adherence of plaque and bacteria

PRACTICAL TIPS

- Use copious water spray to minimize friction heat build up
- Apply feather-light pressure to instruments
- Use slow speeds between 8,000 and 20,000 RPMs maximum



Posterior tooth before use



After use



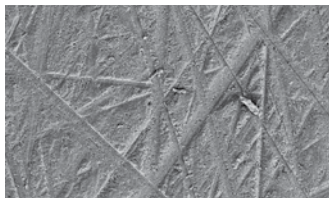
Anterior tooth before use



After use

REF	DESCRIPTION	QTY
390006	Couture Diamond Polishing Brush	6

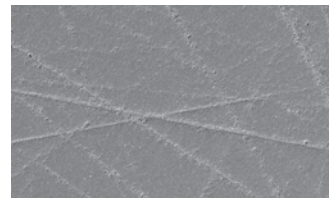
SEM IMAGES OF ENAMEL SURFACE SMOOTHNESS (BEFORE AND AFTER POLISHING)



Initial



Silica/Aluminum Oxide Brush



Diamond Polishing Brush

FINISHING & POLISHING

Couture™ Diamond Polishing Paste

One-Step, Universal Polishing Paste

For professionals who prefer paste polishing, Couture Diamond Polishing Paste with **Applied Diamond Technology (ADT)** is a one-step, universal polishing paste. With a uniform distribution of extra fine diamond particles, it polishes composites to an enamel like surface for maximized esthetics. The very small particle size produces an ultra-smooth surface with high luster. In addition, it limits the adherence of plaque and bacteria, and the subsequent development of gingivitis and periodontal disease.



REF	DESCRIPTION	QTY
390007	Couture Diamond Polishing Paste, (2.5g syringe with nylon bristle brush)	1

POLISHING PASTE FEATURES

- Applied Diamond Technology produces a smooth surface in only seconds
- Ultra-fine diamond particles won't abrad the tooth enamel or dentin (3 μm avg. particle size)
- Applies quickly and easily
- Unique paste won't splatter at recommended speeds
- Brilliant results in just 15 seconds – that's all you need!

PRACTICAL TIPS

- Use with nylon brushes or prophy cups
- Apply feather-light pressure for the best polish
- Use paste at low speeds (6,000 rpm) in handpieces
- Close cap tightly. Store in a refrigerator between applications to maintain paste's homogenous consistency
- Return to room temperature before use
- A small amount goes a long way



Fast, one-step final polishing and high-gloss shine in only 15 seconds, producing an enamel-like finish.

ProxiDiscs®

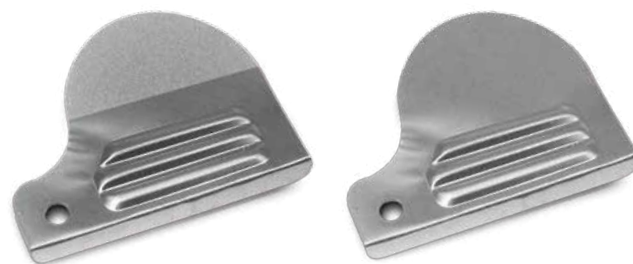
Proximal Separator Discs

ProxiDiscs are stainless-steel, autoclavable proximal separator discs that help create space by adjusting tight contacts and by breaking through tight cement, or by removing excess materials from interproximal areas.

Diamond ProxiDiscs have a fine diamond-coating on one side and are smooth on the other. After breaking through cement it can quickly remove excess material while protecting enamel on the adjacent tooth. Diamond ProxiDiscs also enable easier placement of matrix bands.

Smooth ProxiDiscs are used to break contacts or to settle teeth when no removal of cement or enamel is desired. The thin, smooth disc easily slides between teeth.

ProxiDiscs are so easy to use. Using a firm rocking motion, simply roll the ProxiDisc through the contact area with pressure to gently remove excess material trapped in interproximal area without damaging the restoration or enamel on both teeth.



Simply rock a ProxiDisc through the contact to break through residual cement or to settle teeth.

REF	DESCRIPTION	QTY
390010	Diamond ProxiDisc 1-sided	4
390011	Smooth ProxiDisc 2-sided	8

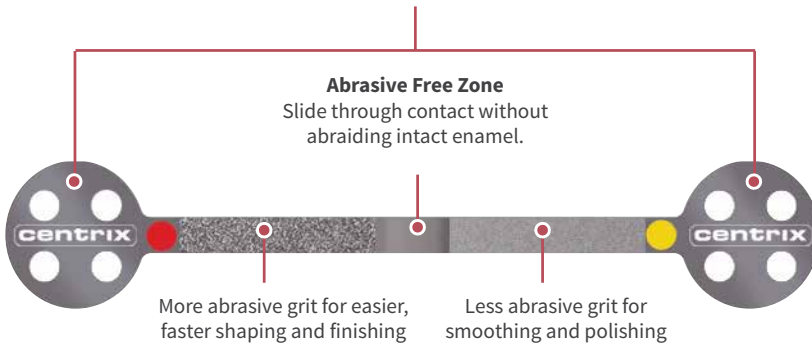
FINISHING & POLISHING

GripStrip™

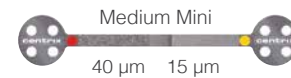
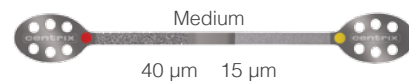
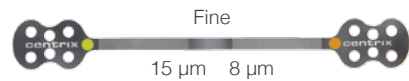
Diamond-Coated Proximal Finishing & Polishing Strips

GripStrip Proximal Finishing & Polishing Strips each feature two diamond grit combinations to enable rapid and exact shaping, finishing and polishing of proximal surfaces to restore the most natural tooth morphology and enamel-like smoothness.

Easy-to-grip handles for easy manipulation, precise control. Handle shape easily identifies the right GripStrip for each use: Coarse, Medium, Fine and Medium Mini (for anterior use).



ABRASIVE COMBINATIONS:



Flexible, durable, autoclavable stainless steel

Enables easy finishing to restore natural contours and the correct shape of each tooth. Stainless steel strips can be autoclaved for repeated use.

Protective reverse side

Smooth reverse side protects the adjacent tooth and intact enamel from abrasion.

PRACTICAL TIPS

- For tight contacts, insert a wedge to create a slight separation between the teeth
- GripStrip Fine should be used for polishing, stain removal
- GripStrip Coarse has a perforated design, ideal for gross reduction and ortho space creation
- To protect contacts, always insert and remove GripStrip at the smooth Free Zone

PRODUCT IN USE



GripStrip Fine: To create beautiful, natural restorations.



GripStrip Coarse: To quickly relieve crowded dentition.



Before: Irregular shapes before restoration.



After: Smooth, natural contours result in beautiful restorations.

REF	DESCRIPTION	QTY
860012	GripStrip Fine	12
860010	GripStrip Medium	12
860014	GripStrip Medium Mini	12
860011	GripStrip Coarse	12
860013	GripStrip Assorted	12

SUGGESTED ACCESSORIES

REF	DESCRIPTION	QTY
390010	Diamond ProxiDisc 1-sided	4
390011	Smooth ProxiDisc 2-sided	8

To find Suggested Accessories use our Index on page 46.



To watch product videos, visit YouTube: CentrixInc

MicroAspirator®

HVE Aspirator

- HVE aspirator with needle tip easily connects to your high-volume evacuator hand piece
- Tip reaches deep into the canal to remove excess moisture and debris
- Single-use and disposable tips for complete asepsis
- Needle tips available in 2 gauges
- Transparent tubing for ease of monitoring
- Faster and easier than using multiple paper points
- **Made in the USA**



Suction Equipment
– HVE Suction Tips

REF	DESCRIPTION	QTY
290051	18 ga, Yellow Hub	24
290052	20 ga, Aqua Hub	24

To find a 24 ga. NeedleTube, an Endo. favorite, visit page 17.

Tempit®

Moisture-Activated Temporary Filling & Sealing Material

Tempit prefilled tips let you inject direct-to-the-prep. No more messy spatulation, squeeze tubes or cross-contaminating jars.

- Ideal for endo access openings and short-term temporaries
- Moisture-activated, sets in 5 minutes or less
- Expands slightly when set, seals out microleakage and bacterial ingress
- Contains calcium sulfate and zinc oxide



REF	DESCRIPTION	QTY
310060	Tempit® Prefilled Tip (0.35 g)	30

SUGGESTED ACCESSORIES

REF	DESCRIPTION	QTY
130650	Snap-Fit™ Gun	1
130651	Snub Nose Snap-Fit Gun	1

Calciject®

Calcium Hydroxide Paste for Root Canal Therapy

- Fine-grain calcium hydroxide paste
- No messy mixing of powder and liquid
- Direct injection from package to mouth
- Single-dose tips for maximum asepsis
- Bendable 20 ga NeedleTube® tips for easy canal access
- Superior results compared to spiral paste fillers
- Bacteriostatic and radiopaque
- Faster and easier than using multiple paper points
- **Made in the USA**

REF	DESCRIPTION	QTY
320003	Calciject® Prefilled Tip (0.20 g)	24

SUGGESTED ACCESSORIES

REF	DESCRIPTION	QTY
130650	Snap-Fit™ Gun	1
130651	Snub Nose Snap-Fit Gun	1



— PREVENTION FOR LIFE® —

FluoroDose®

5% Sodium Fluoride Varnish with Xylitol

For more information on FluoroDose, see -page 23.

1

FluoroDose is award-winning and inexpensive. Top fluoride varnish 4 years in a row and is less than \$1.00 per dose!



DENTAL ADVISOR TOP AWARD: FLUORIDE VARNISH

2

FluoroDose goes on smooth, is not stringy or clumpy, stays on clear so there is no tooth discoloration.



5

FluoroDose single-dose packaging for its ease of use and cleanup.



5 Reasons to Buy FluoroDose®

4

Patient Approved!
FluoroDose is preferred by all ages, comes in five great flavors



CARAMEL

BUBBLE GUM

MINT

CHERRY

MELON

3

FluoroDose dries in seconds upon contact with saliva and remains on teeth for 6 to 8 hours for optimum fluoride uptake.

“

FluoroDose comes in five flavors that are well received by children and adults. My adult patients love the caramel, and a kid's¹ favorite is of course bubble gum. FluoroDose is also an award-winning Fluoride Varnish year after year, as well as one of the least expensive unit-dose varnishes on the market. How often is the least expensive also the best?

— Donna Brogan RDH, BS

INDEX (Alphabetical by Product Name)

Products:

3.n.One™ Impression Trays.....	11	Couture™ Diamond Polisher Cups and Points.....	40	S/Class® Gun	14
AbsoLute™	39	Couture™ Diamond Polishing Brushes.....	41	Snap-Fit™ Gun	12
Access® Automix Nozzle Needle Tips.....	16	Couture™ Diamond Polishing Kit.....	40	Snub Nose Snap-Fit™ Gun	12
Access BLUE®	9	Couture™ Diamond Polishing Paste	42	SofNeedle™	19
Access Crown®	29	D/Sense® Crystal™	25	Spatulas.....	19
Access® Disposable Barrel Impression Syringe	11 & 16	E/Z™ Gun.....	14	SuperCure®	35
Access® Edge.....	28	Encore®	34	SuperCure®- Q	35
AccessFLO®	28	Encore® D/C	32	SuperMixer™	15
Access® Impression Materials	10	Encore® D/C Automix.....	32	Tempit®	31 & 44
Access Standard™ Impression Needle Tip	11 & 19	Encore® D/C MiniMix.....	32	Tempit® Essentials	31
Access® Standard™ Impression Syringe	11 & 16	Encore® AF	34	Tempit® L/C	31
Access® Temporary Cement.....	30	Exposé®	24	Tempit® Ultra	31
Access® Tray Adhesive	11	FluoroDose®	23	Tempit® Ultra-F	31
AccuDose® 19ga NeedleTube®	17	GingCap™	27	VersaBox™	19
AccuDose® 20ga NeedleTube	17	GingiTrac™	26	VersaFlo®	38
AccuDose® 24ga NeedleTube	17	GingiTrac™ MiniMix.....	26	VersaLite®	38
AccuDose® High Viscosity.....	17	Glu/Sense™	39		
AccuDose® Low Viscosity	18	GripStrip	43		
AccuDose® Ribbon Tube	17	LolliCaine®	25		
AccuDose® TriPack™ Starter Kit ...	17	LubeCube®	37		
Automix Guns	16	Luer-Lock Needles.....	19		
Benda® Brush Mini	20	Mark I™ Syringe	13		
Benda® Brush Regular.....	20	Mark II™ Snap-Fit™ Syringe.....	13		
Benda® Micro Extra-Fine	21	Mark IIIp™ Gun.....	13		
Benda® Micro Fine	21	Medium Viscosity Tubes.....	18		
Benda® Micro Regular	21	MicroAspirator®	44		
Benda® Micro Twin	22	Mixing Pads.....	19		
Benda® Micro Twin Extra-Fine	22	NoCord™ VPS.....	6-8		
Benda® Twin	22	NoMIX®	30		
Calciject®	45	Onyx™	35		
Champ™	24	ProxiDiscs	42		
Connexio®	33	RapidCore® Automix	36		

Categories:

Delivery Systems	12-22
Endodontic	44
Finishing & Polishing.....	40-43
Impressioning.....	6-11
Oral Care & Prevention	23-25
Restorative.....	32-39
Temporization	29-31
Tissue Management	26-28

The Centrix New Product Guarantee



We Make Dentistry Easier! Purchase any NEW Centrix product with confidence. Your satisfaction is guaranteed.

Not satisfied? Contact your Product Specialist or call our Customer Service Department at **800.235.5862**.

Return Policy:

The NEW Product Guarantee states that if you are not satisfied with a new product purchase, we will make it correct. Contact us for a Return Material Authorization (RMA) number.

- Standard return policy for unopened product: within 30 days – Full Credit
- Standard return policy for unopened product: past 30 days – 75% Credit
- There are no returns for product past 60 days

If at any time a Centrix product is not performing as stated in the instructions, please contact our Customer Service Department to report the issue and obtain an RMA number for return to our Quality Department for evaluation.

We welcome your comments and suggestions about our product guide. Please feel free to contact us regarding its content or to obtain additional guides.

Call us toll-free at **800.235.5862** or email us directly at **customerservice@centrixdental.com**. We look forward to hearing from you!

How To Order



Centrix will place and process your order through your preferred dealer OR order directly through your preferred dealer.



Call toll-free: **800.235.5862**, in the USA and Canada.



Fax toll-free: **888.CENTRIX**, in the USA



www.centrixdental.com
www.CentrixNoCordVPS.com

Connect with us!



Centrix-Inc



@CentrixInc



centrixdental



Centrix Inc.



CentrixInc



CENTRIX INCORPORATED

770 River Road
Shelton, CT, 06484, USA

TEL: 203.929.5582
TOLL-FREE (USA & Canada):
800.235.5862
FAX: 203.929.6804

CENTRIX GERMANY

Max-Planck-Str. 22
50858 Köln

TEL: 02234 9498770
TOLL-FREE: 08002368749
FAX: 02234 9498778

CENTRIX ROMANIA

Str. Calea Floreasca, Nr.169
Floreasca Cube - Business Hub
Floor 1, Room 9
Bucharest, Sect.1, 014459

TEL: +4 0723 357 233
+4 0765 664 850