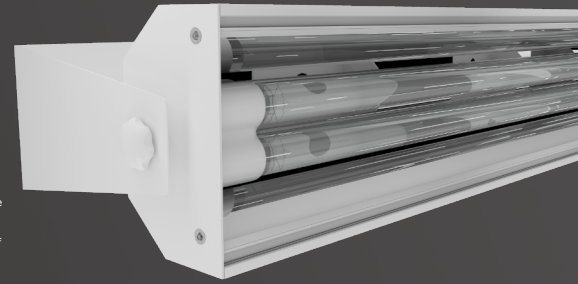


EXTERYA 3 Extvet is a direct action germicidal lamp designed to air and surface disinfection.

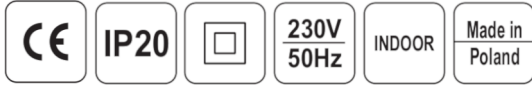
The emitting radiation with wavelength of 253,7 nm effectively deactivates viruses, bacteria and fungi.

This type of direct action germicidal lamp is a perfect solution for disinfecting a room where nobody is present.

The lamp will be a perfect decoration in every space due to its minimalist design and high quality.



- Precautions :**
1. Ultraviolet rays may cause skin and eyes burns (irritation of the conjunctiva and the cornea). Only direct radiation may have a harmful effect. Ultraviolet rays do not penetrate through windows, pair of glasses and the majority of transparent plastics.
  2. It is necessary to protect animals and plants against direct radiation. The direct radiation on animals has the same harmful effect as it has on people.
  3. Colours may fade away due to long exposure to ultraviolet rays. It is necessary to protect paintings and other precious items. White plastic material may turn yellow because of long intensive exposure.
  4. After disinfecting the room, it is advisable to air the space in order to get rid of the odor. The odor is not harmful for people.
  5. In case of breaking the radiator : DO NOT TOUCH IT WITH BARE HANDS ! Air the room for 30 minutes. Handling of mercury requires special caution. It is necessary to wear double gloves and avoid direct contact with the broken glass. Put the content of the fluorescent light bulb inside a plastic box or a sealed plastic bag and close it tightly. It is forbidden to use vacuum cleaners or other tools e.g. cloths that are used to clean items that come into contact with food. It is forbidden to throw away mercury waste to a dustbin.
- In order to find out where you can throw away mercury waste, please contact your local selective waste collection point.  
The correct handling of the lamp will protect the user against mercury intoxication and will prevent toxic environmental pollution.



<b>General data</b>	<b>Ambient temperature range:</b> 0°C + 35°C <b>Guarantee:</b> 2 years <b>Application:</b> veterinary clinic, medical clinic, dental clinic
<b>Electrical data</b>	<b>Supply:</b> 220-240V 50/60Hz <b>Equipped in radiator:</b> yes <b>Electrical connection:</b> 3,5 length 3-core wire <b>Accessories:</b> remote control, timer <b>Mounting options:</b> mobile, wall mounted
<b>Mechanical data</b>	<b>Body:</b> IP20, aluminium, powder-coated <b>Colour:</b> white/grey



Code EAN	Mounting options	Radiator lifetime UV-C (h)	Power (W)	Number of radiators	Type of radiator (W)	Maximum volume of the room (m3)	Remote control	Timer	Colour
5903802423150	mobile	8000	63	1	55	26	YES	YES	white
5903802423167	mobile	8000	63	1	55	26	YES	YES	grey
5903802423174	wall mounted	8000	63	1	55	26	YES	YES	white
5903802423181	wall mounted	8000	63	1	55	26	YES	YES	grey
5903802423198	mobile	8000	107	1	95	30	YES	YES	white
5903802423204	mobile	8000	107	1	95	30	YES	YES	grey
5903802423211	wall mounted	8000	107	1	95	30	YES	YES	white
5903802423228	wall mounted	8000	107	1	95	30	YES	YES	grey

Code EAN	Mounting options	Dimensions (mm)	Height (mm)	Quantity in package (pcs)
5903802423150	mobile	480 x 100 x 60	1300	1
5903802423167	mobile	480 x 100 x 60	1300	1
5903802423174	wall mounted	480 x 100 x 60		1
5903802423181	wall mounted	480 x 100 x 60		1
5903802423198	mobile	480 x 100 x 60	1300	1
5903802423204	mobile	480 x 100 x 60	1300	1
5903802423211	wall mounted	480 x 100 x 60		1
5903802423228	wall mounted	480 x 100 x 60		1

Current product data and terms of warranty are available on the website: [www.exterya.com](http://www.exterya.com).  
Parameters in the product sheet are given for Ta=25 degrees Celsius  
The manufacturer reserves the right to make construction modifications in lamps.  
Power tolerance +/- 10%.

